

& CLUTCH

STA  
162-22

NOTE:  
DIMENSIONS EXCEED .125  
LARGER BOLTS WILL BE REQ'D

SEE CONTINUATION  
THIS DRAWING  
X-----X

CROSSBAR  
ASS'Y.

BOLTS  
WASHERS  
WASHERS  
428 NUT

(3) AN4-22A BOLTS  
(3) AN970-3 WASHERS

BELT RETAINER

SEE DWG. C-602 FOR  
ASSEMBLY INSTRUCTIONS

AN3-12A BOLT  
AN960-10L WASHER  
MS20365-1032

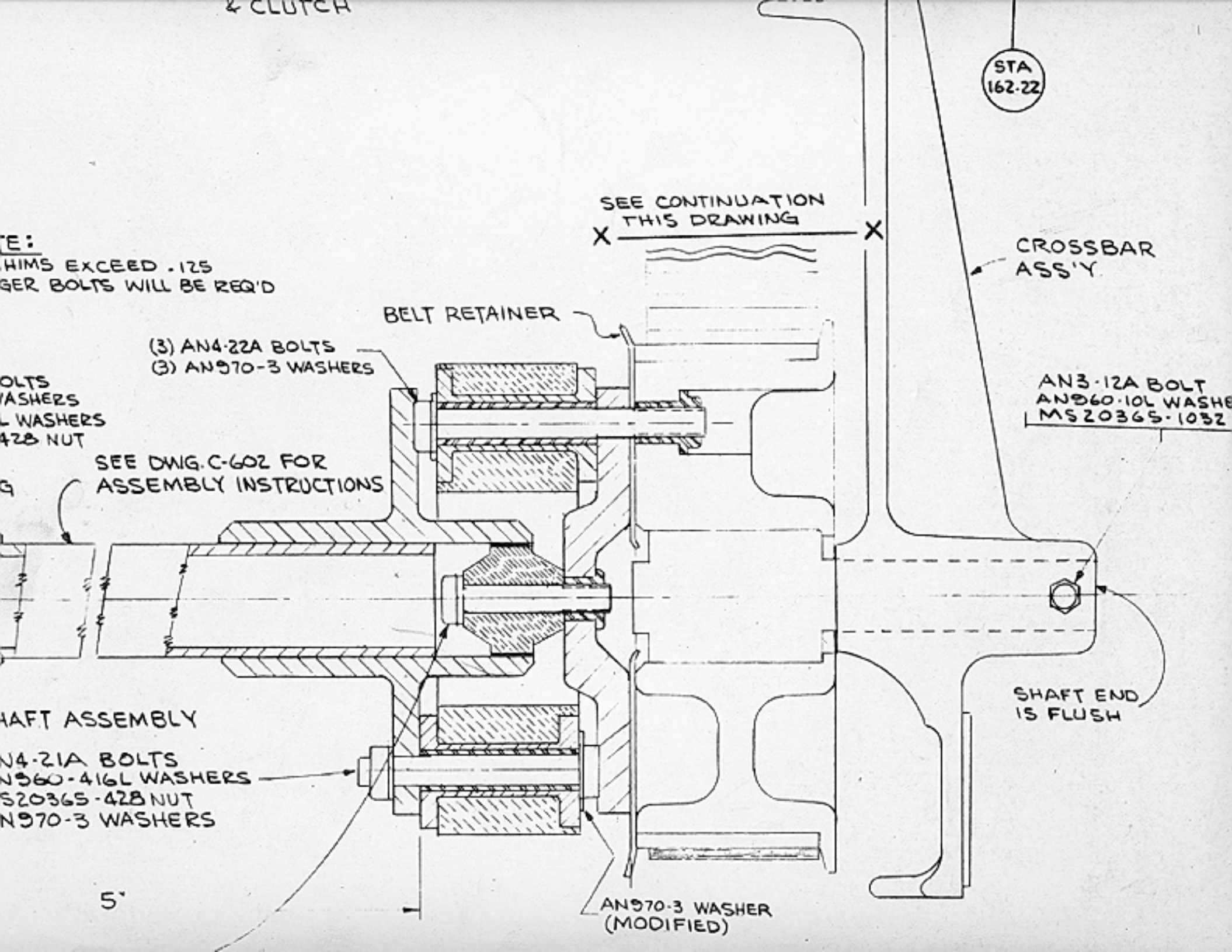
SHAFT ASSEMBLY

AN4-21A BOLTS  
AN960-416L WASHERS  
MS20365-428 NUT  
AN970-3 WASHERS

SHAFT END  
IS FLUSH

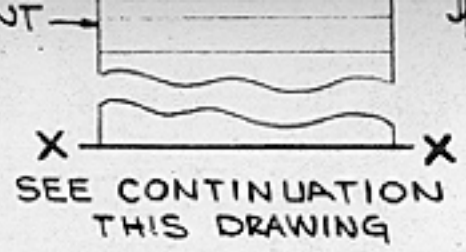
AN970-3 WASHER  
(MODIFIED)

5"





ALIGNMENT & ALIGNMENT PROCEDURES



**NOTE:**

IF SHIMS EXCEED .125 LONGER BOLTS WILL BE RE

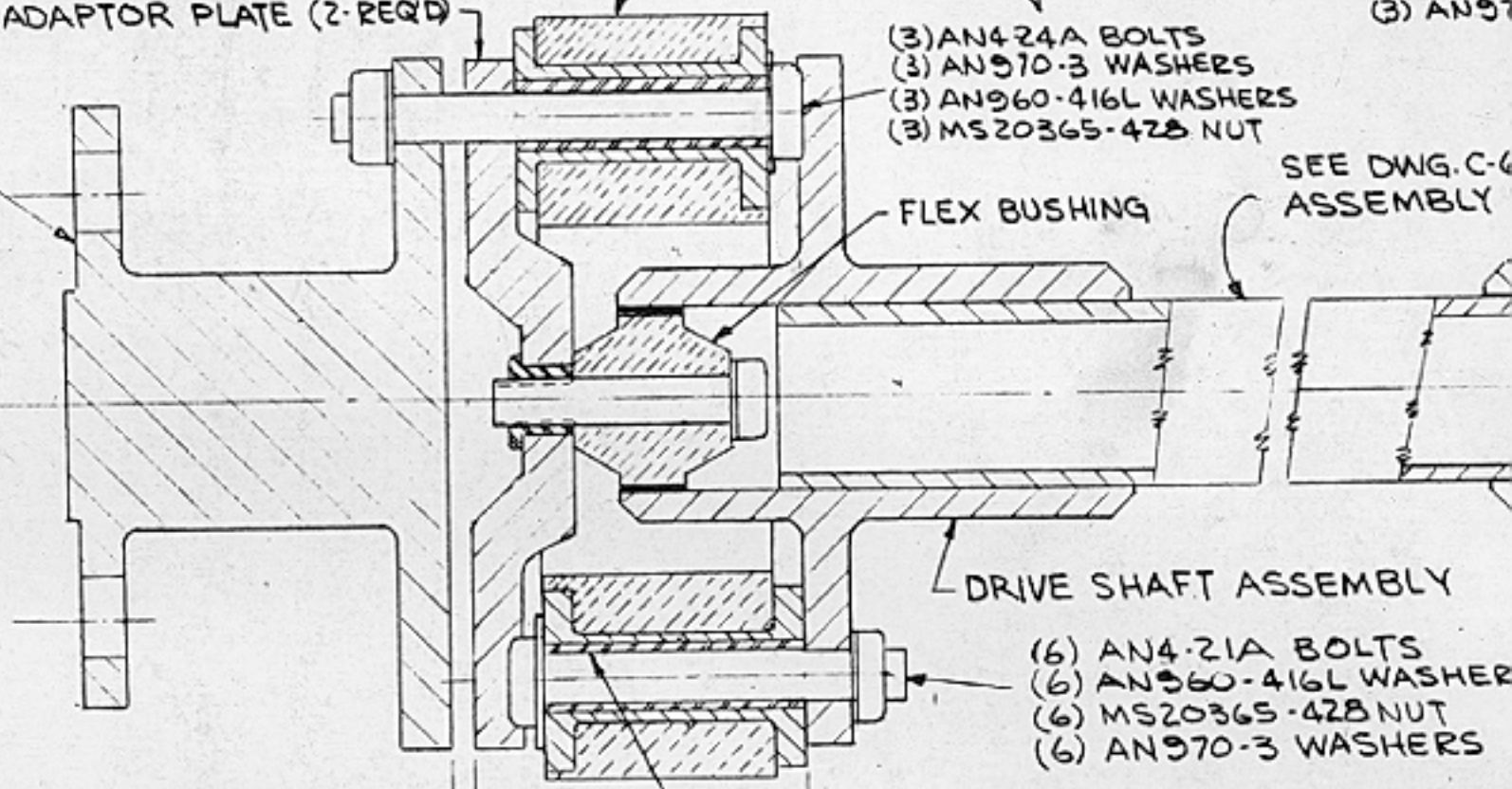
FLEXIBLE COUPLING (2-REQ'D.)  
ADAPTOR PLATE (2-REQ'D.)

- (3) AN4-24A BOLTS
- (3) AN970-3 WASHERS
- (3) AN960-416L WASHERS
- (3) MS20365-428 NUT

- (3) AN4-2
- (3) AN97

HONDA CIVIC ADAPTOR SHOWN. ADAPTORS AVAILABLE FOR OTHER ENGINES

SEE DWG. C-6 ASSEMBLY



FLEX BUSHING

DRIVE SHAFT ASSEMBLY

- (6) AN4-21A BOLTS
- (6) AN960-416L WASHER
- (6) MS20365-428 NUT
- (6) AN970-3 WASHERS

SPACER (12-REQ'D.)

.125" FOR SHIMS  
.25" MAXIMUM

5"

- (2) AN4-14A BOLTS
- (4) AN960-416 WASHERS

1974  
1975  
1976  
1977  
1978  
1979  
1980  
1981  
1982  
1983  
1984  
1985  
1986  
1987  
1988  
1989  
1990  
1991  
1992  
1993  
1994  
1995  
1996  
1997  
1998  
1999  
2000  
2001  
2002  
2003  
2004  
2005  
2006  
2007  
2008  
2009  
2010  
2011  
2012  
2013  
2014  
2015  
2016  
2017  
2018  
2019  
2020  
2021  
2022  
2023  
2024  
2025

ASHTON, KEN