

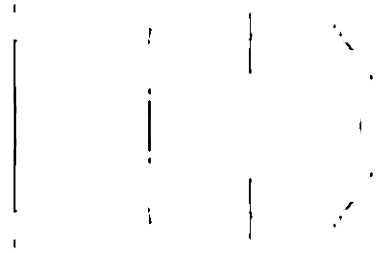
Chapter Section

CHAPTER SECTION

**BD-5**

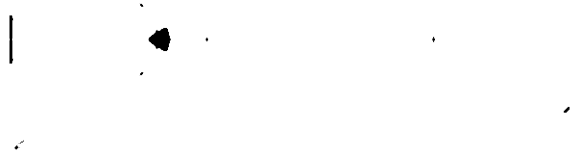
**8.5x11 Templates**

**NOTE: unless specified  
these templates are 1:1 SCALE**

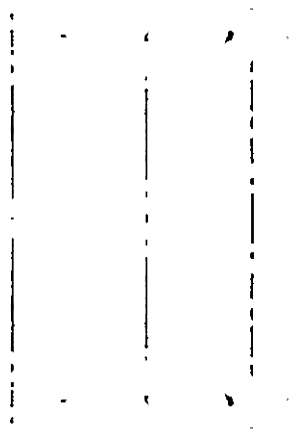


0001 (10) 10

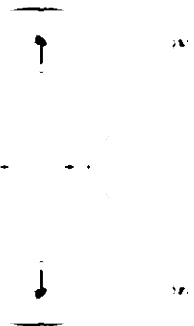
Handwritten text, possibly a title or description, located below the first diagram.



Handwritten text, possibly a title or description, located below the second diagram.



Handwritten text or labels located to the right of the third diagram.

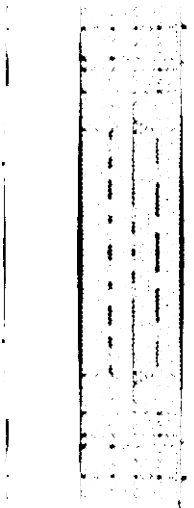
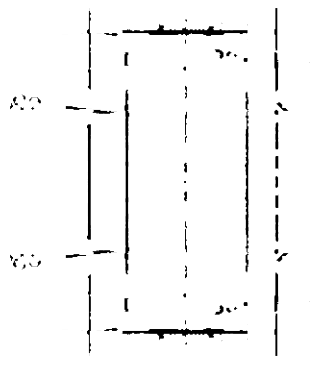


Handwritten text or labels located to the right of the fourth diagram.

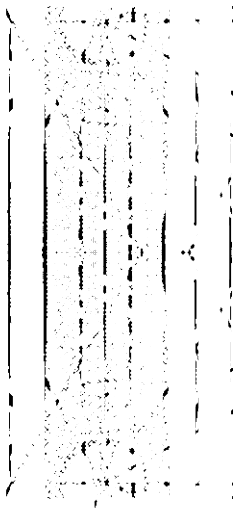




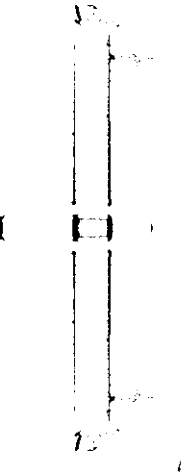
3. 1. 1. 1.



L



— aqua color



I

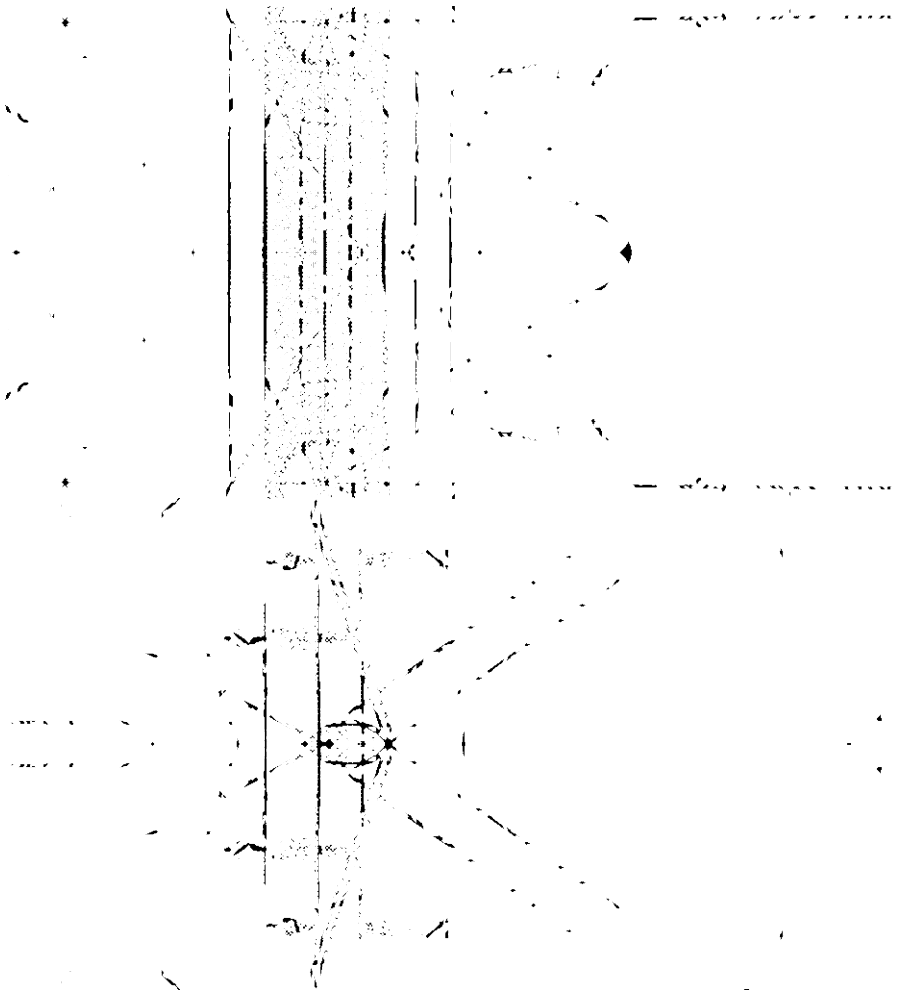
√

—

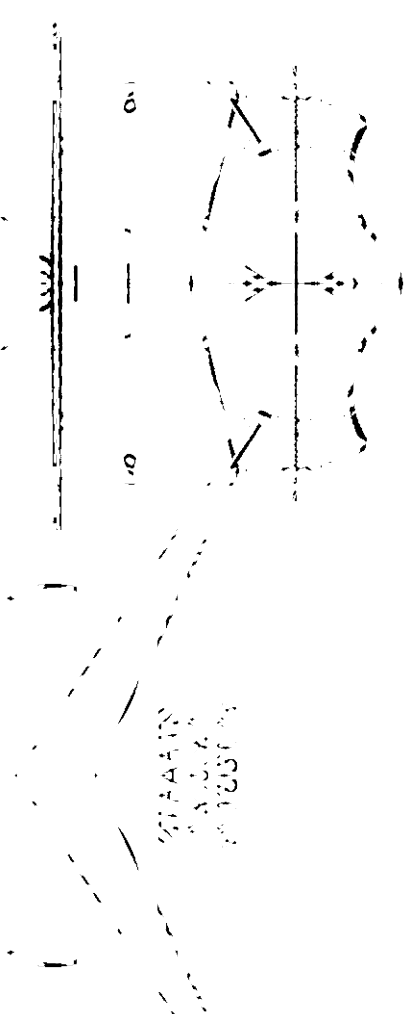
—

—

—



STATION

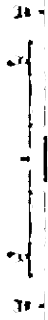


STATION

STATION  
 142 54  
 143 54

ST 10

STATION 142 54

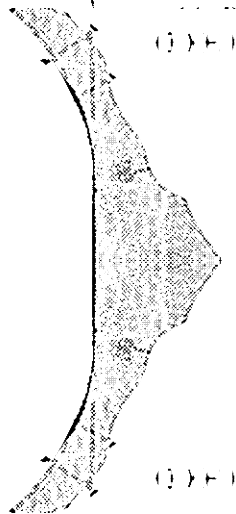
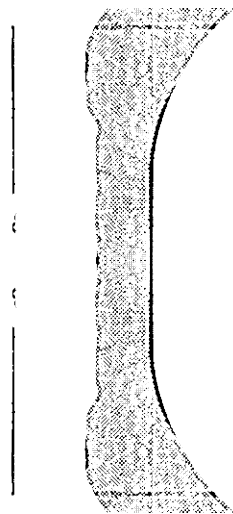


STATION 143 54

+

STATION  
 144 54  
 145 54

STATION 146 54



STAINLESS STEEL  
CLEARANCE HOLE FOR KEY FROM  
FLAT SURFACE

THIS DOCUMENT IS UNCLASSIFIED  
DATE 10-10-2010 BY 60322 UCBAW/SAB/STP  
REASON: EXECUTIVE ORDER 13526  
AUTHORITY: E.O. 13526, 60322 UCBAW/SAB/STP

EXHIBIT  
PAGE 001R  
5/2/2004

REH

EXHIBIT

..... 001R ± 000000

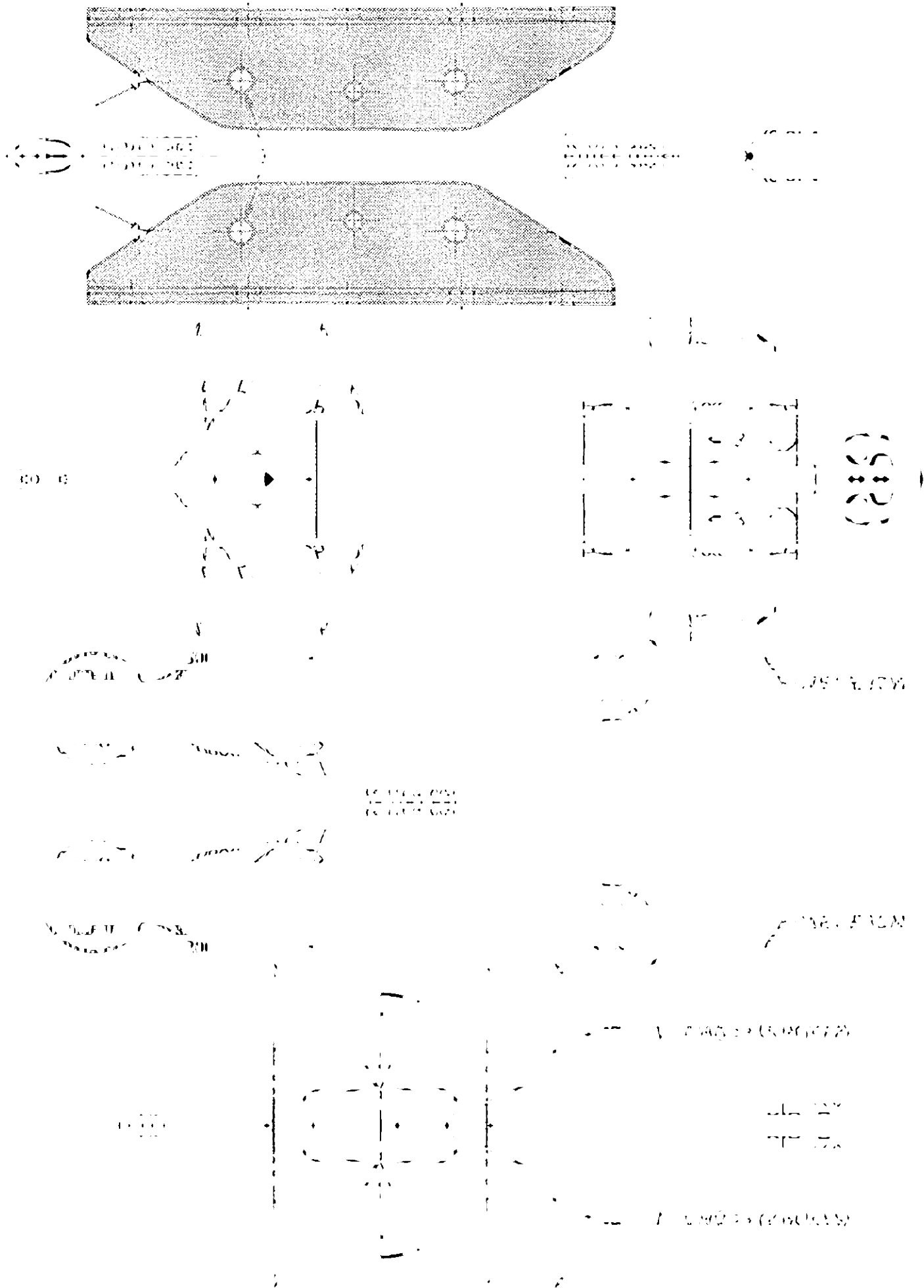
001R ± 000000  
001R ± 000000

001R ± 000000

001R ± 000000

..... 001R ± 000000





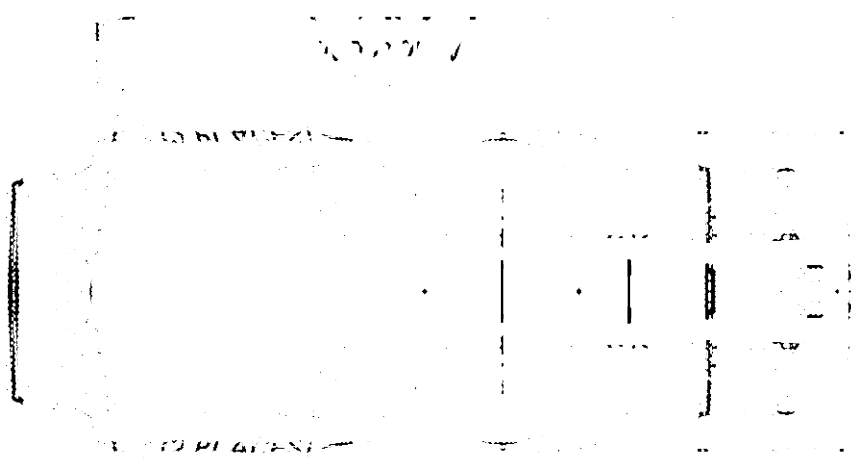


FIGURA 1

ALTERNATIVA  
 2011-2012 (L. 10/02/2011)

ALTERNATIVA  
 2011-2012 (L. 10/02/2011)

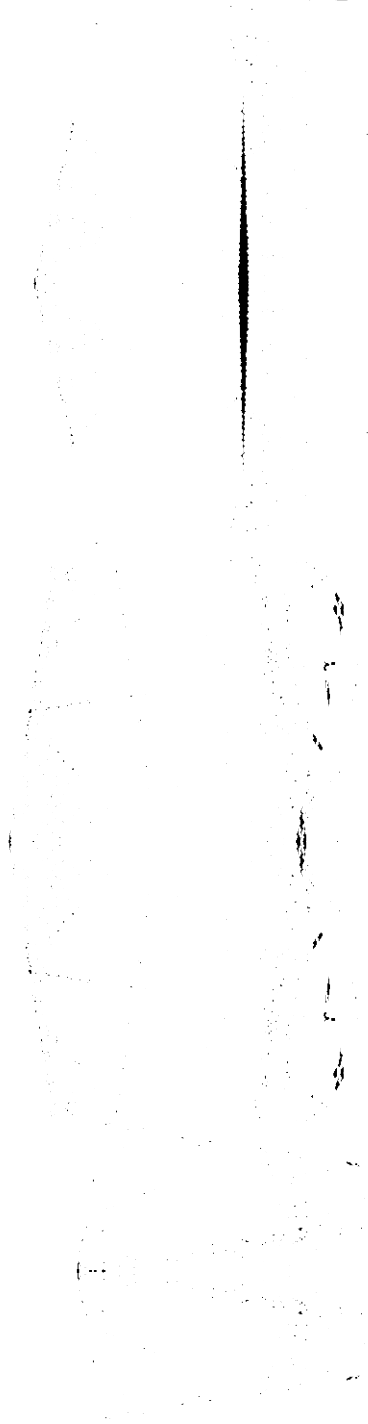


FIGURA 2  
 ALTERNATIVA  
 2011-2012 (L. 10/02/2011)







CONTOUR  
LINES  
NOTES

1. CAN  
2. 13-8  
3. 17-8  
4. 17-8  
5. 17-8  
6. 17-8

CONTOUR  
LINES  
COORDS.

17-8

17-8

17-8

CONTOUR LINES

CONTOUR LINES (COORDS) (COORDS) (COORDS) (COORDS) (COORDS) (COORDS) (COORDS) (COORDS) (COORDS) (COORDS)



DATE 10/07/1980

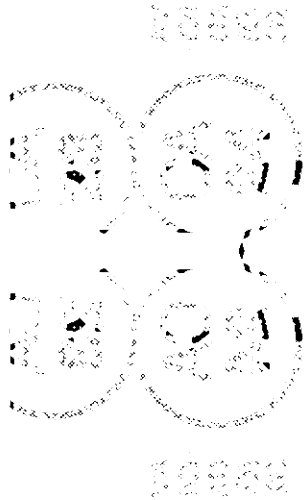


FIG. 1

FIG. 2

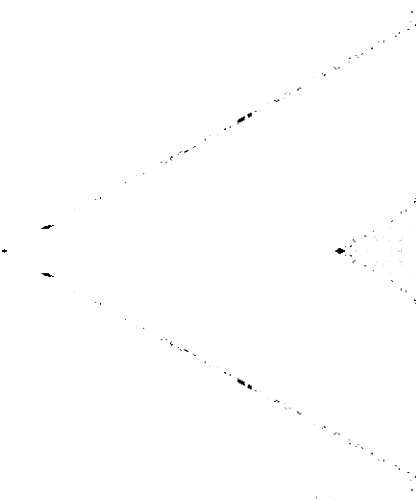
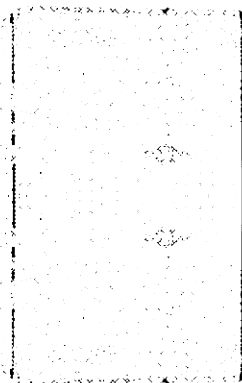


FIG. 5

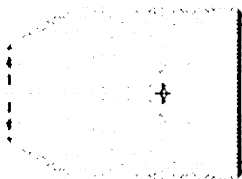
FIG. 6

FIG. 7

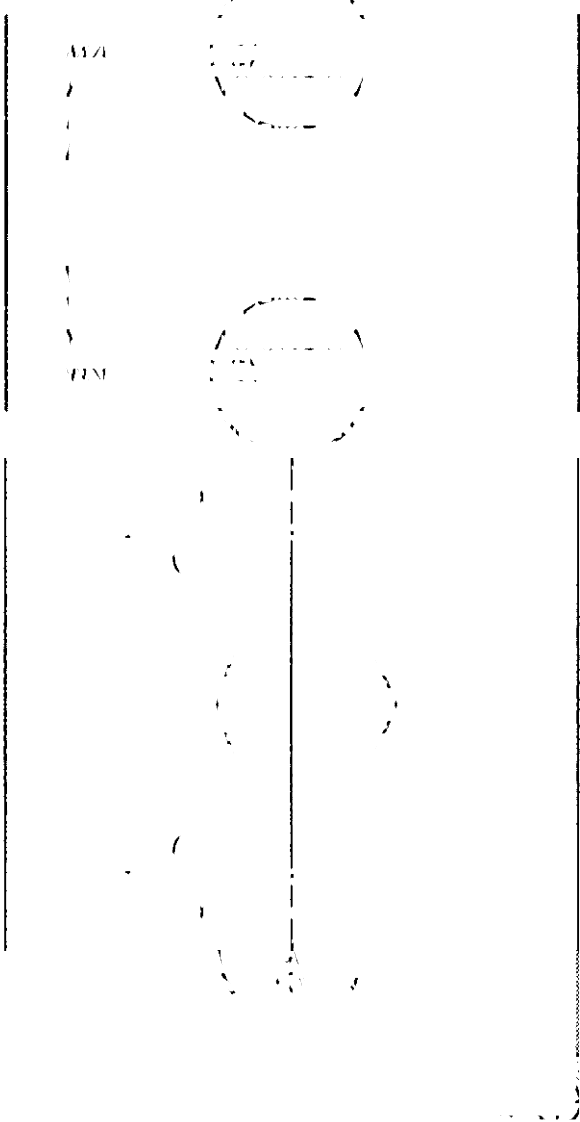
JAMES EARL RAY  
MURKIN  
FUGITIVE



U.S. GOVERNMENT PRINTING OFFICE  
1975 O 451-144

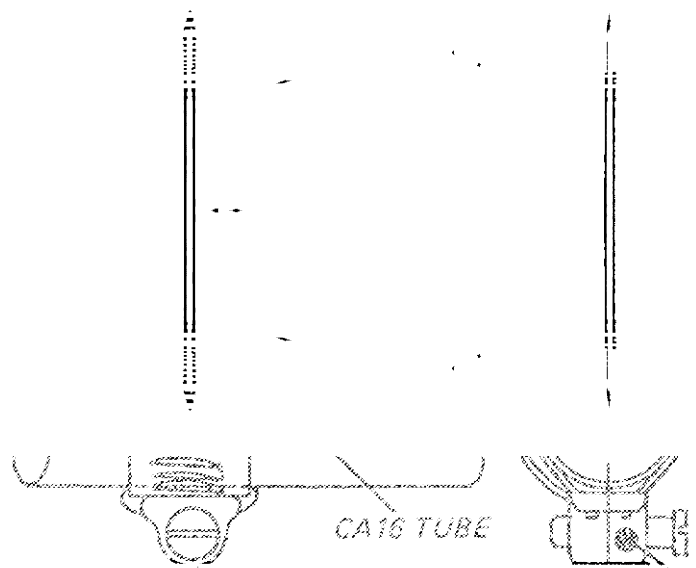


U.S. GOVERNMENT PRINTING OFFICE  
1975 O 451-144



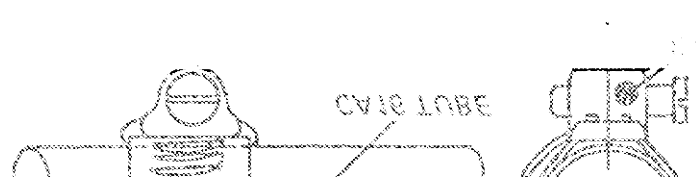
VIEW FROM THE LEFT  
 1/2" DIA. 1/4" DIA. 1/8" DIA.

VIEW FROM THE RIGHT  
 1/2" DIA. 1/4" DIA. 1/8" DIA.



CA16 TUBE

EDWARD1469@MAC.COM



CA16 TUBE

EDWARD1469@MAC.COM

EDWARD1469@MAC.COM  
 DO NOT REPRODUCE

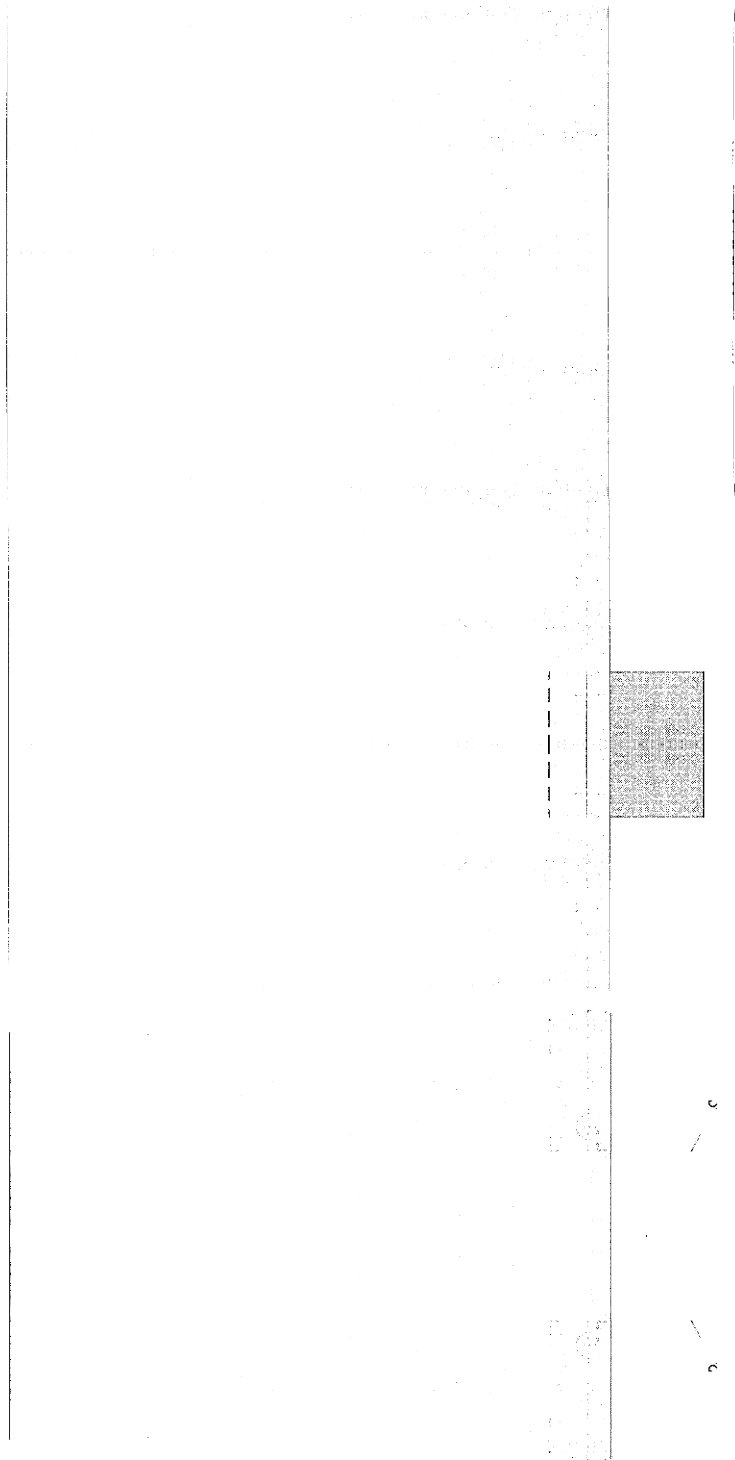
EDWARD1469@MAC.COM





WAT 895 104  
01042 24010

1. ADIT 2005 01042  
2. ADIT 2005 01042  
3. ADIT 2005 01042



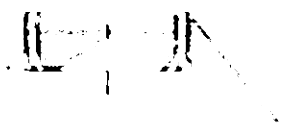
ADIT 2005 01042  
ADIT 2005 01042  
ADIT 2005 01042



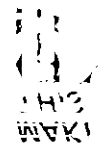
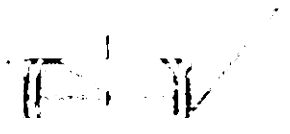




1 (25) 2000 2000  
2000 2000



2000 2000



2000 2000

4130 COND. AND STEEL STRINGS  
MAKING THIS A  
2000 2000

MAKING THIS A

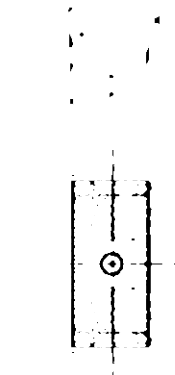
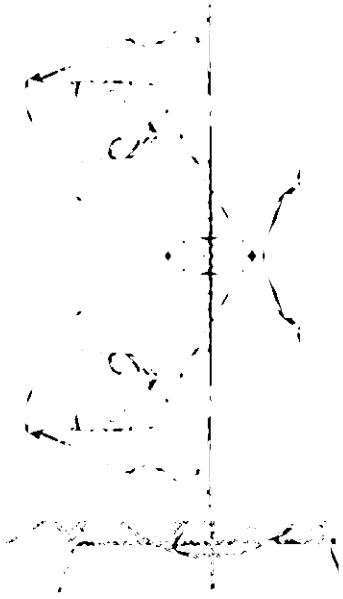
2000 2000

4130 COND. AND STEEL STRINGS  
MAKING THIS A  
2000 2000

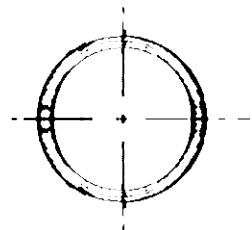
MAKING THIS A

2000 2000





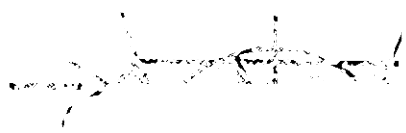
PROF. DR. ...



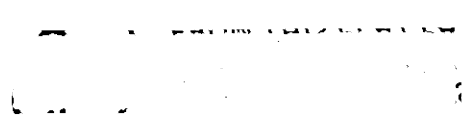
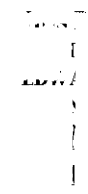
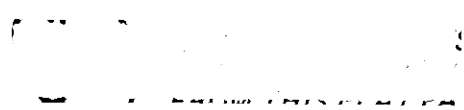
PROF. DR. ...

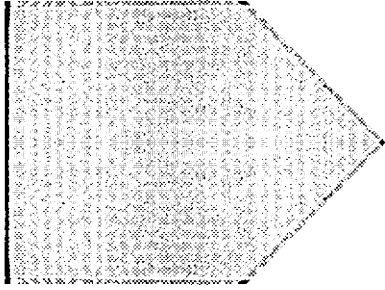
PROF. DR. ...

PROF. DR. ...

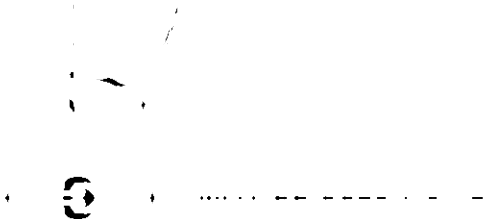


PROF. DR. ...

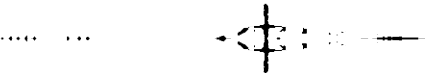
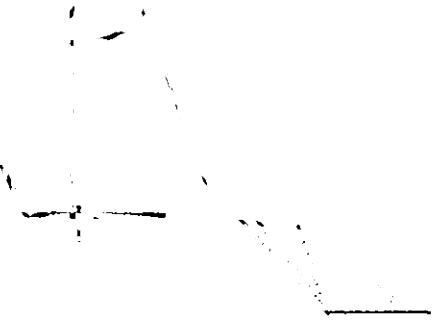




1 2 3



1 2 5



Handwritten text: "The following is a list of the items that were inspected and found to be in compliance with the requirements of the contract."

Handwritten text: "The following is a list of the items that were inspected and found to be in compliance with the requirements of the contract."

Handwritten text: "The following is a list of the items that were inspected and found to be in compliance with the requirements of the contract."

Handwritten text: "The following is a list of the items that were inspected and found to be in compliance with the requirements of the contract."

Handwritten text: "The following is a list of the items that were inspected and found to be in compliance with the requirements of the contract."



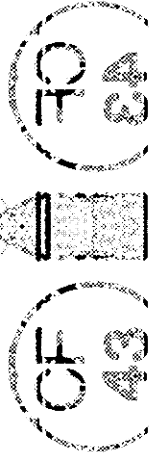
PROCUR

CF 4340 IN 100% 50

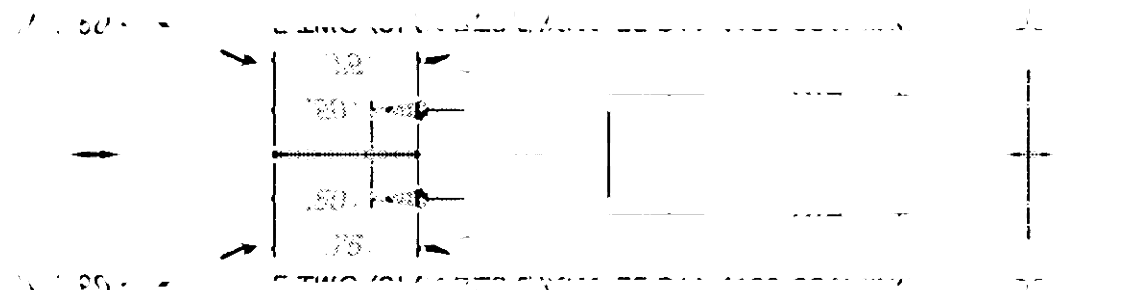
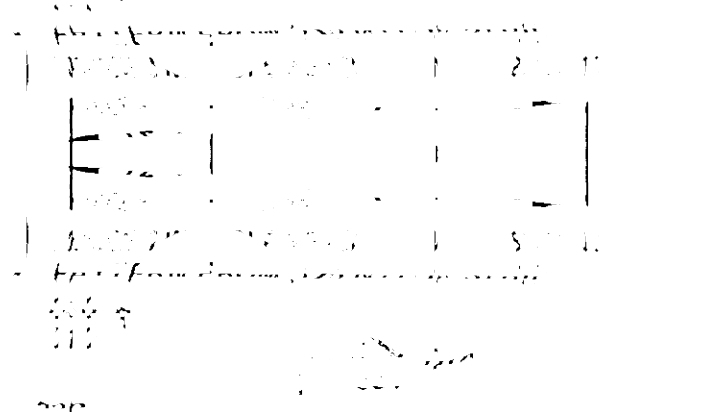
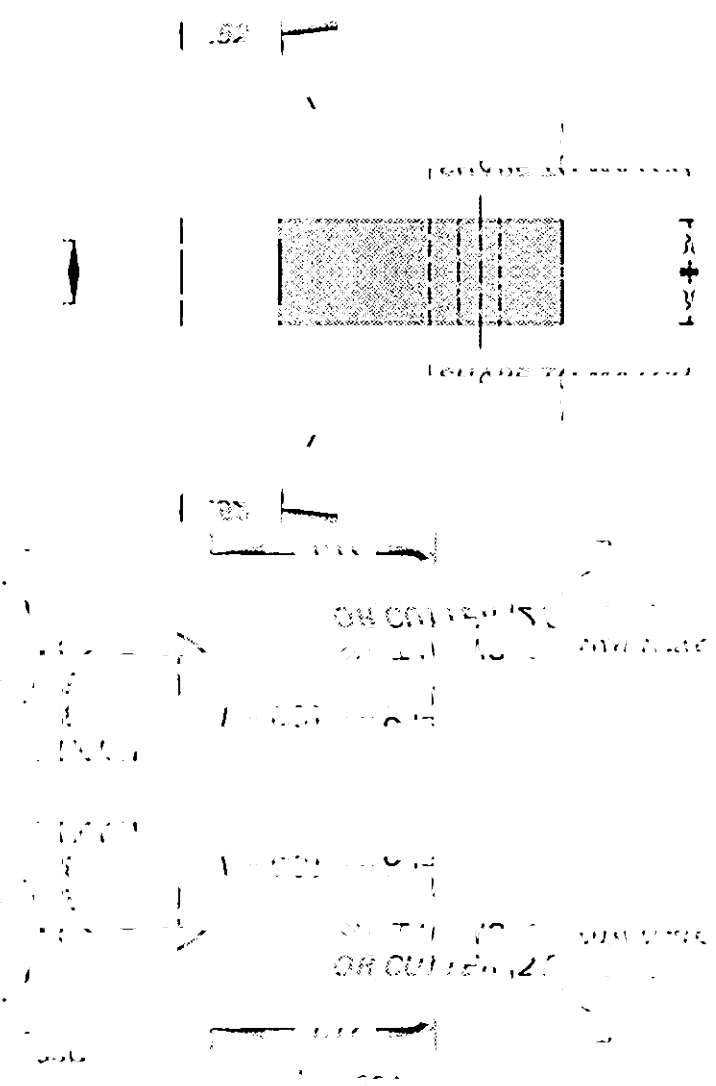
ALL 25 IN 200% 100% 50

BILL IN CF430, 100% 100% 50

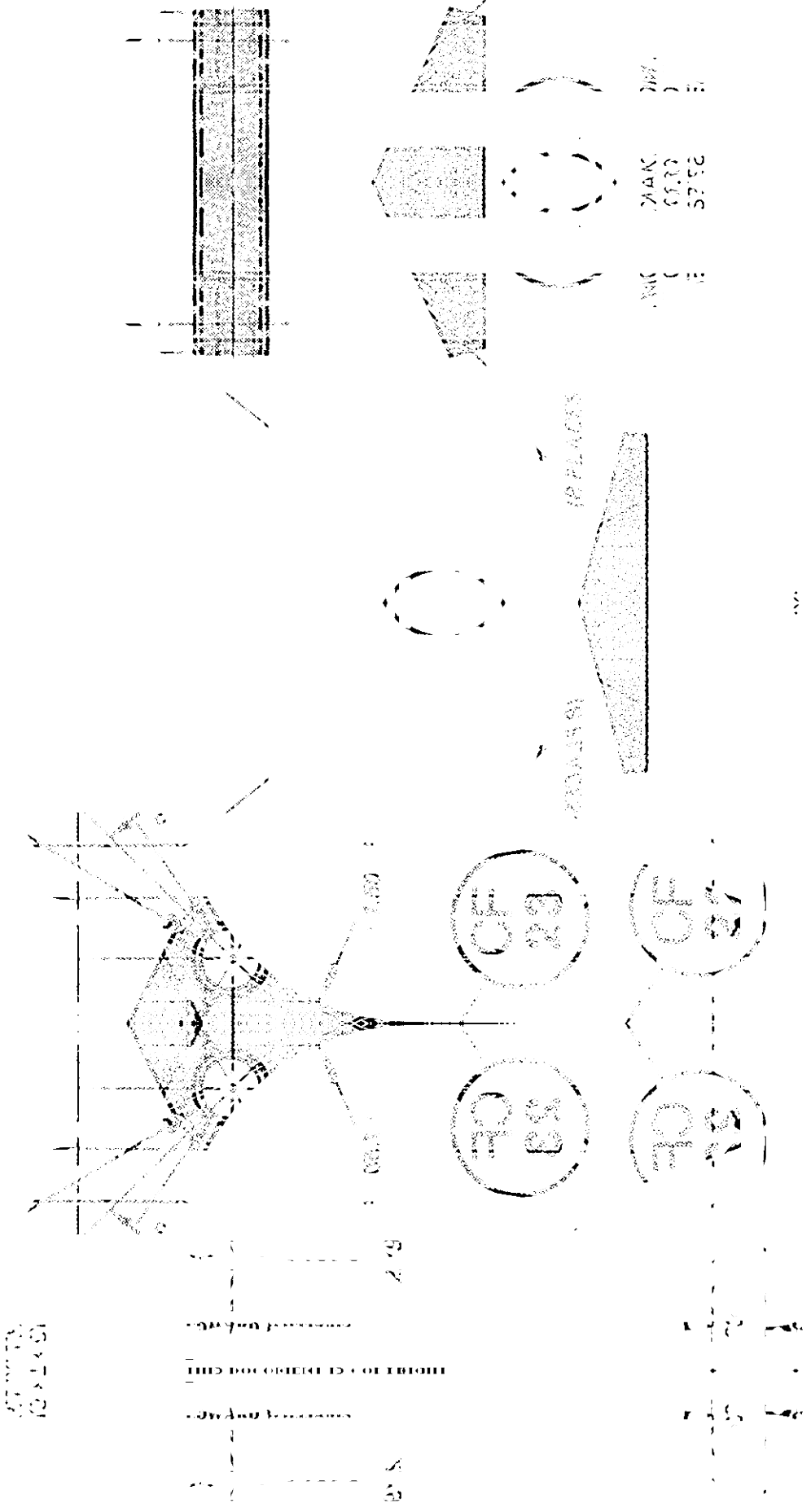
2 IN CF44 ONLY, 100% 100% 50



ADDITIONAL INFORMATION

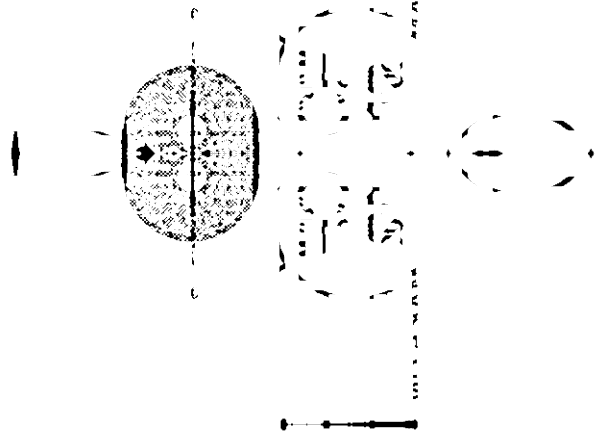
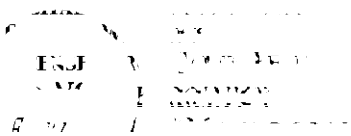
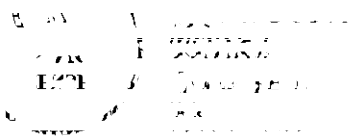
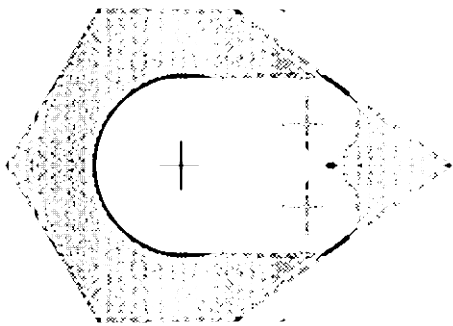
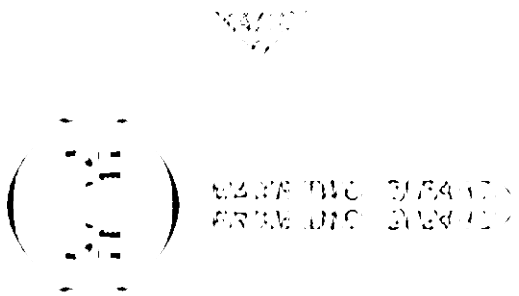
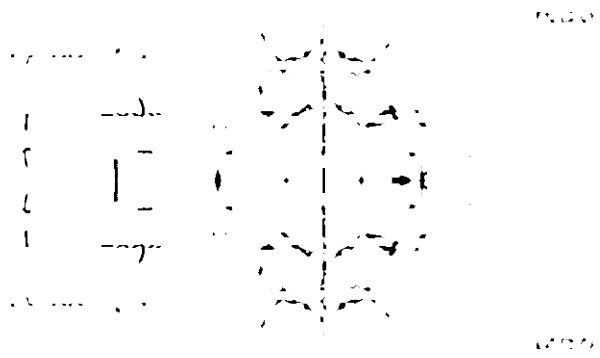


2055 E. AVENUE 1, SUITE 100, DENVER, CO 80202  
 303.733.1111  
 1000 DE LOACH BLVD, DENVER, CO 80202  
 303.733.1111



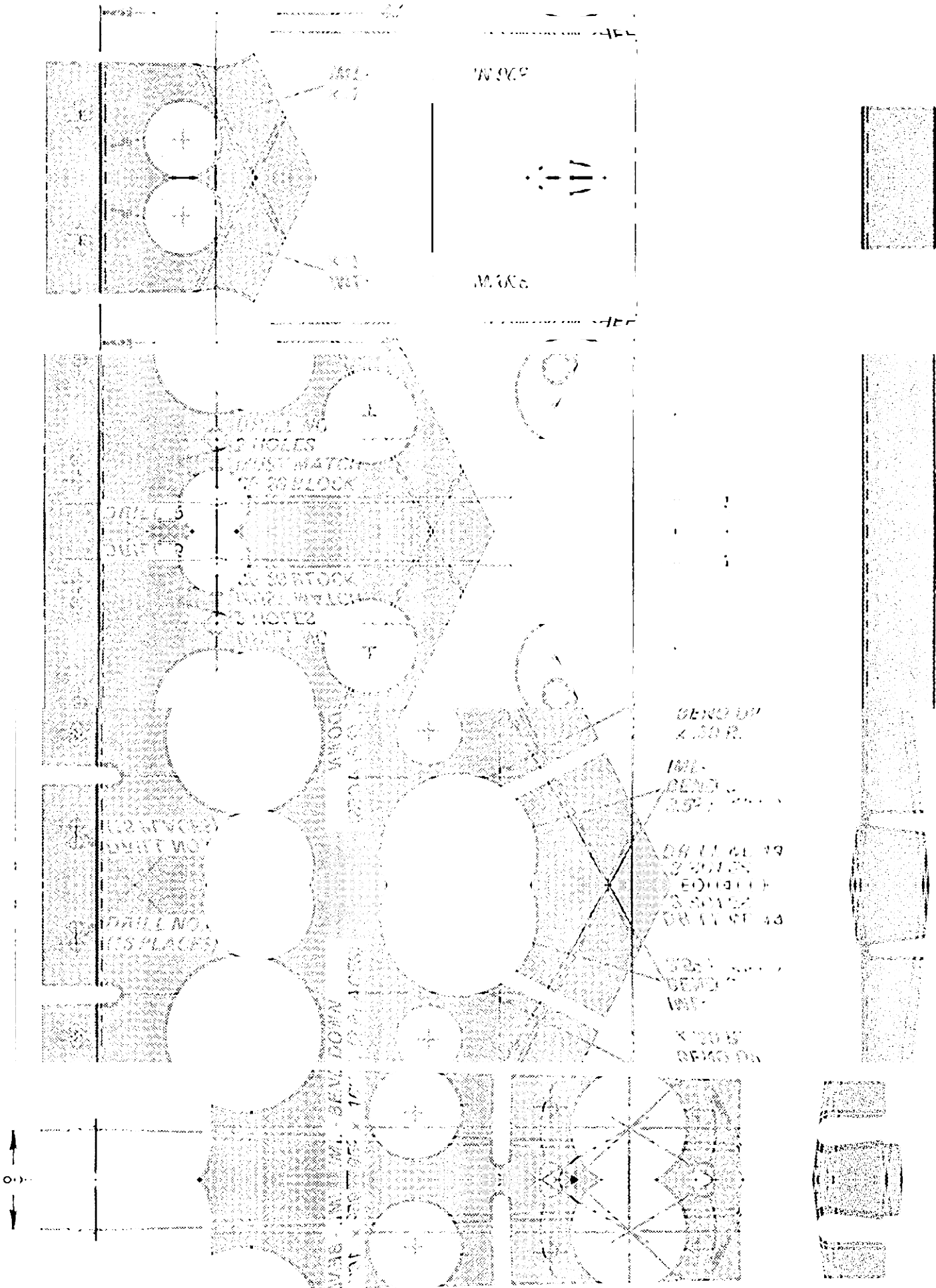
ALUMINUM

1000 DE LOACH BLVD  
 DENVER, CO 80202  
 303.733.1111



MATEMATICI DUBA (D)

PROJEKCIJA DUBA (D)



DRILL NO. 3 HOLES  
MUST MATCH TO SUBBLOCK

DRILL NO. 3 HOLES  
MUST MATCH TO SUBBLOCK

DRILL NO. 3 HOLES  
MUST MATCH TO SUBBLOCK

DRILL NO. 3 HOLES  
MUST MATCH TO SUBBLOCK

DRILL NO. 3 HOLES  
MUST MATCH TO SUBBLOCK

BEND UP 45°

BEND UP 45°

BEND UP 45°

BEND UP 45°

BEND UP 45°

0.11

8'X.16R

9'X.16R

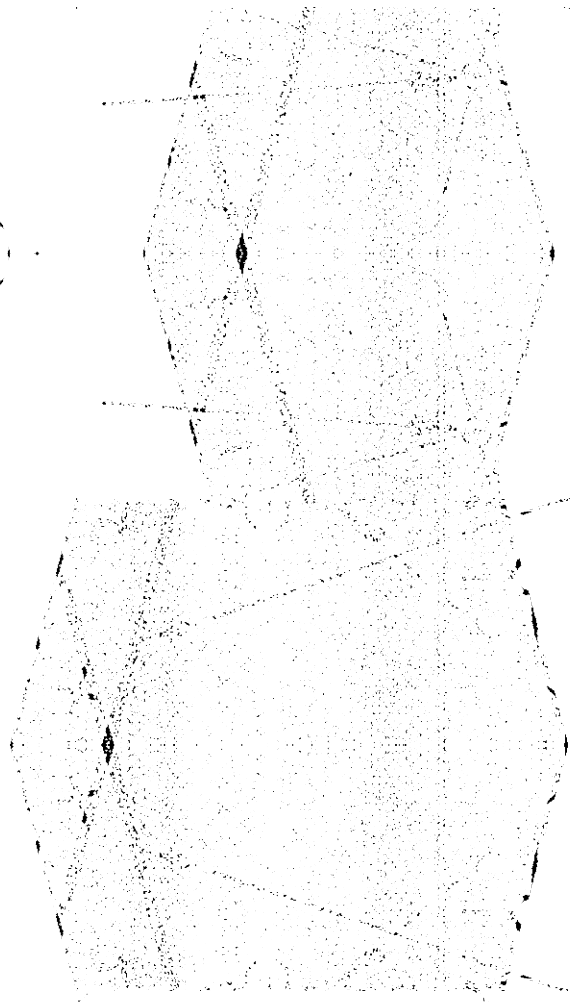
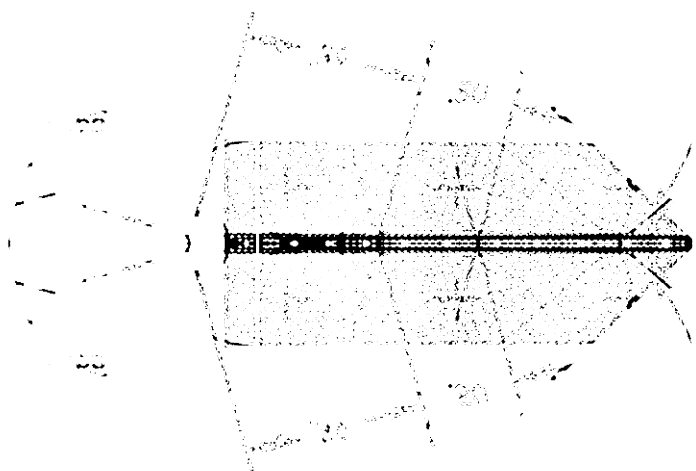
NO. 1000

NO. 1000

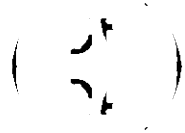
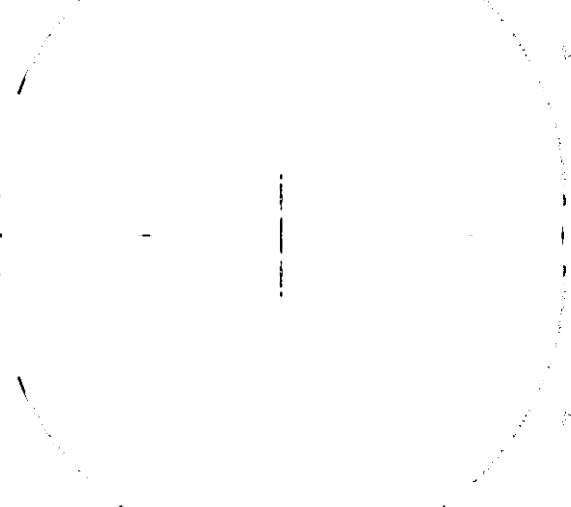


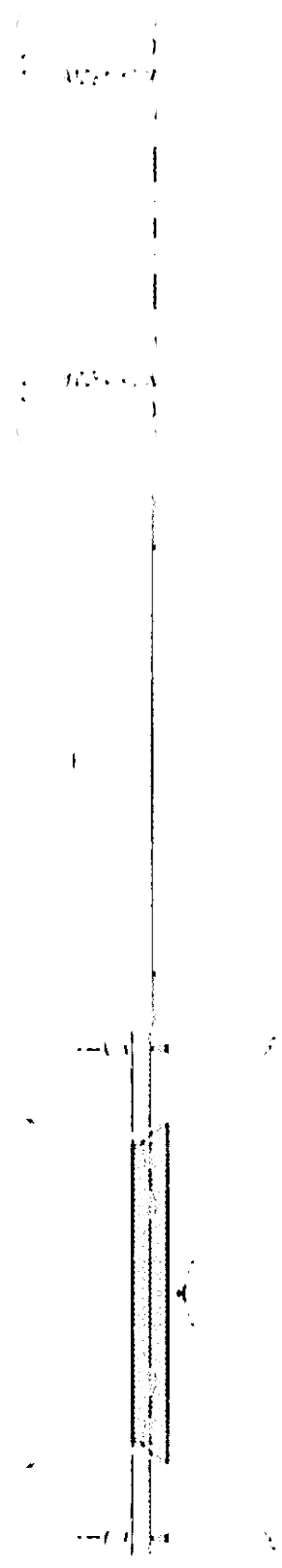
TOP VIEW

FRONT VIEW



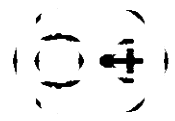
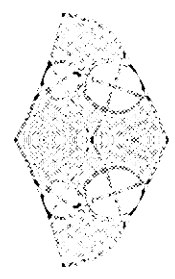
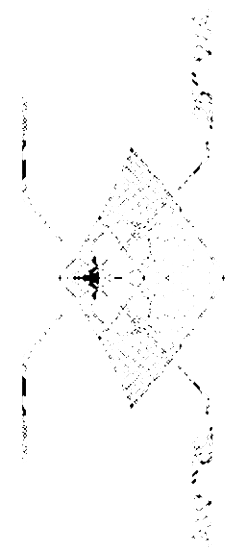
SECTION A-A





PLAN VIEW OF THE HOLE

CLEARANCE HOLE WHICH IS AS SHOWN  
 IN THE DRAWING ATTACHED TO THE

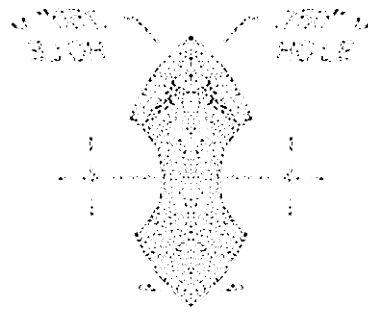


(1) 1/16" + 0.0015" / -0.0015"  
 (2) 1/16" + 0.0015" / -0.0015"

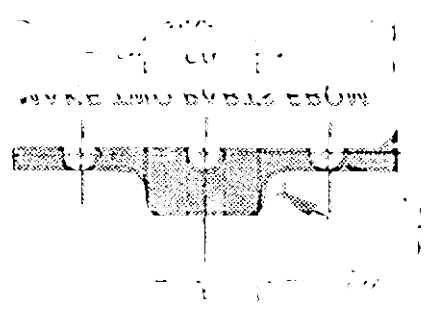
0.0015" MAX

0.0015" MAX

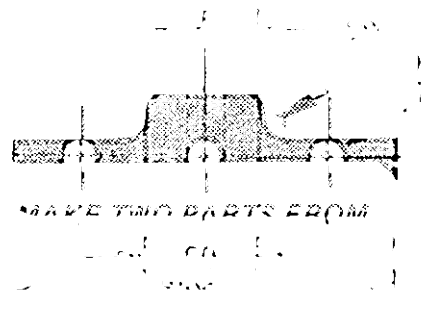
THIS DOCUMENT IS COPYRIGHT  
 BY THE NATIONAL BUREAU OF STANDARDS  
 AND TECHNOLOGY  
 AND IS AVAILABLE FROM THE NATIONAL  
 BUREAU OF STANDARDS  
 400 MICHIGAN AVENUE, N.W.  
 WASHINGTON, D.C. 20540  
 GPO : 1975 O - 348-102



1. MAKE TWO PARTS FROM  
 2. MAKE TWO PARTS FROM  
 3. MAKE TWO PARTS FROM



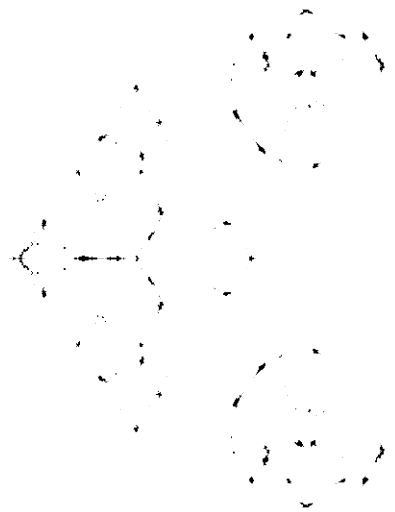
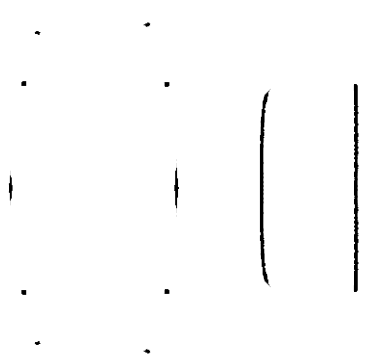
1. MAKE TWO PARTS FROM  
 2. MAKE TWO PARTS FROM  
 3. MAKE TWO PARTS FROM



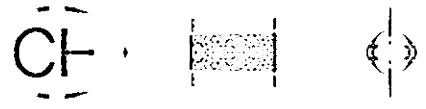
1. MAKE TWO PARTS FROM  
 2. MAKE TWO PARTS FROM  
 3. MAKE TWO PARTS FROM

THIS DOCUMENT IS COPYRIGHT  
 BY THE UNITED STATES GOVERNMENT  
 AND IS IN THE PUBLIC DOMAIN IN THE  
 UNITED STATES OF AMERICA  
 FOREIGN RIGHTS ARE RESERVED  
 THIS DOCUMENT IS COPYRIGHT  
 BY THE UNITED STATES GOVERNMENT  
 AND IS IN THE PUBLIC DOMAIN IN THE  
 UNITED STATES OF AMERICA  
 FOREIGN RIGHTS ARE RESERVED





2  
NO. 348 (REV. 12-15-61)  
CLASS



CLASS  
NO. 348 (REV. 12-15-61)  
CLASS

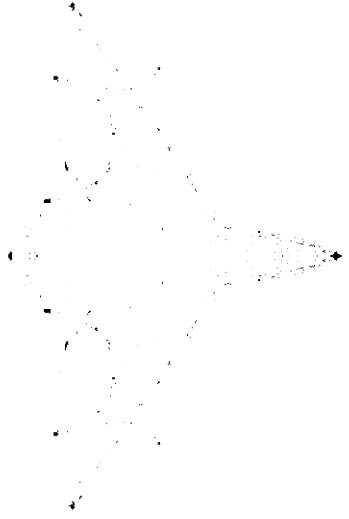
CLASS

CLASS



NO. 348 (REV. 12-15-61)  
CLASS

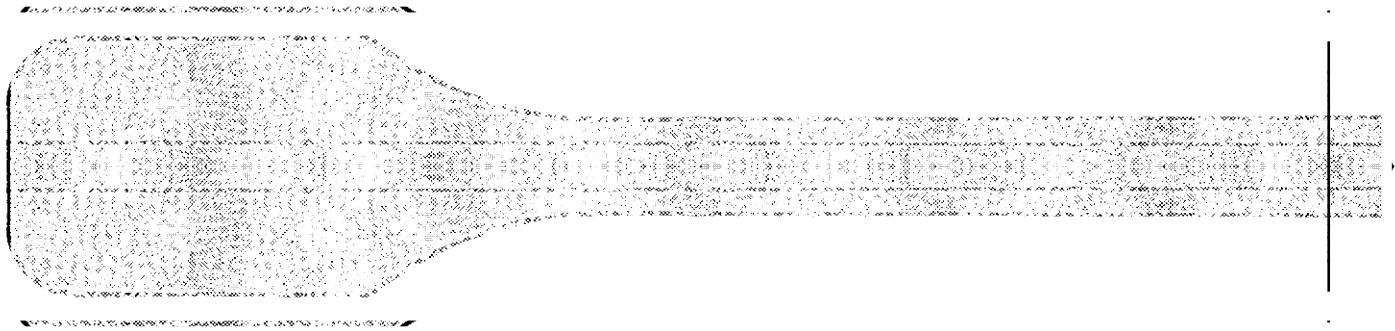
NO. 348 (REV. 12-15-61)  
CLASS



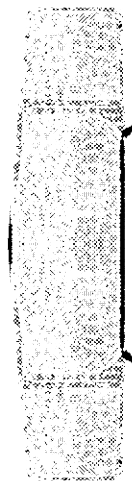
**THIS DOCUMENT IS COPYRIGHTED**  
BY THE NATIONAL BUREAU OF STANDARDS  
AND TECHNOLOGY  
AND IS NOT TO BE REPRODUCED  
WITHOUT PERMISSION FROM THE  
BUREAU OF STANDARDS AND TECHNOLOGY

( 3 ) NO. 348 (REV. 12-15-61)  
NO. 348 (REV. 12-15-61)  
NO. 348 (REV. 12-15-61)





FR 100% (UP10) (SHOWN)

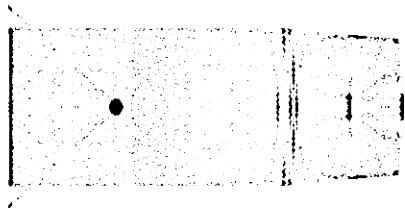


FR 100% (UP10) (SHOWN)

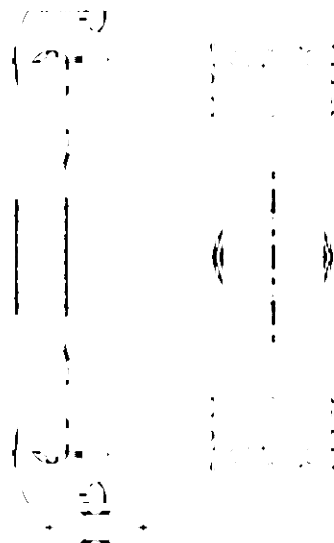
FR 100% (UP10) (SHOWN)

FR 100% (UP10) (SHOWN)  
 FR 100% (UP10) (SHOWN)  
 FR 100% (UP10) (SHOWN)  
 FR 100% (UP10) (SHOWN)  
 FR 100% (UP10) (SHOWN)

FR 100% (UP10) (SHOWN)  
 FR 100% (UP10) (SHOWN)  
 FR 100% (UP10) (SHOWN)

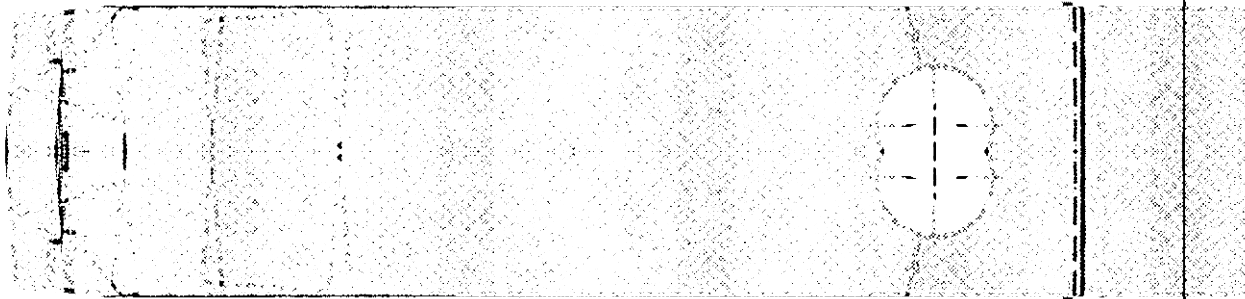


FR 100% (UP10) (SHOWN)  
 FR 100% (UP10) (SHOWN)

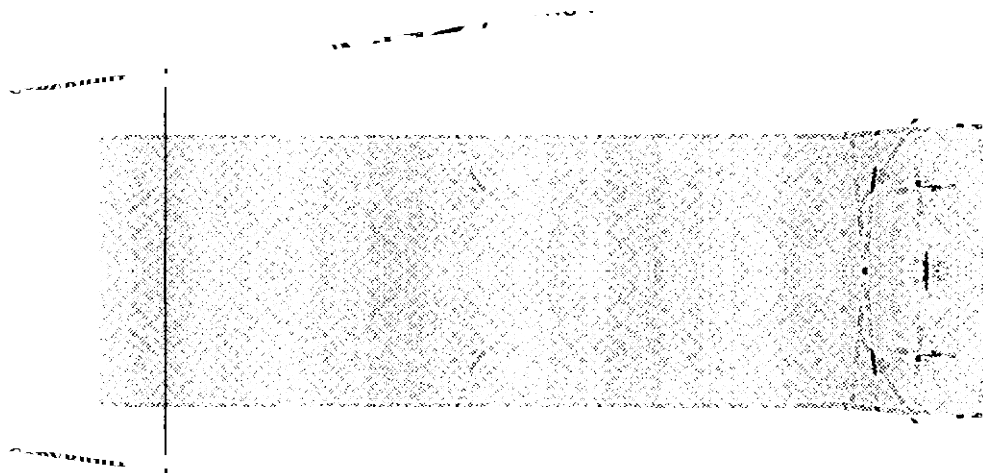




0012 00 401 00 1

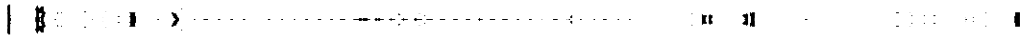


0012 00 401 00 1



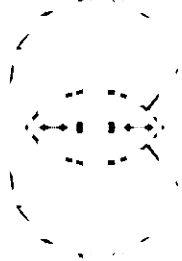
0012 00 401 00 1  
0012 00 401 00 1  
0012 00 401 00 1

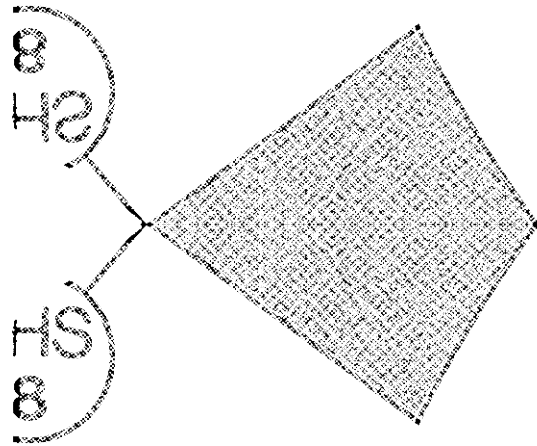
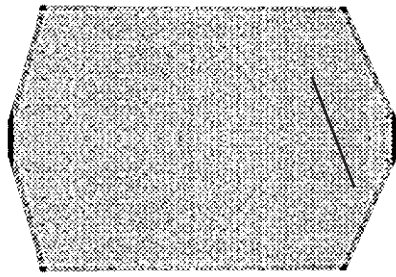
0012 00 401 00 1  
0012 00 401 00 1



0012 00 401 00 1  
0012 00 401 00 1  
0012 00 401 00 1

0012 00 401 00 1  
0012 00 401 00 1

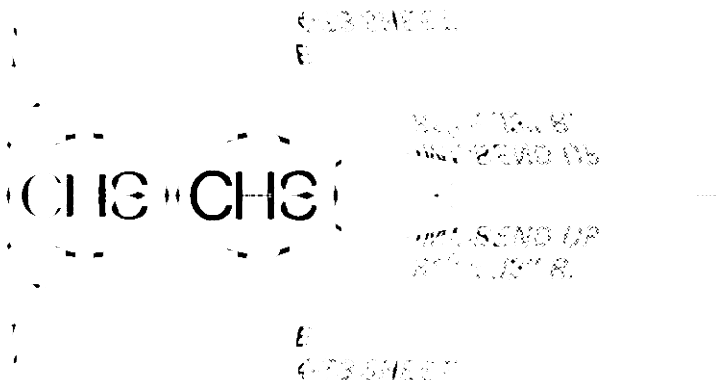
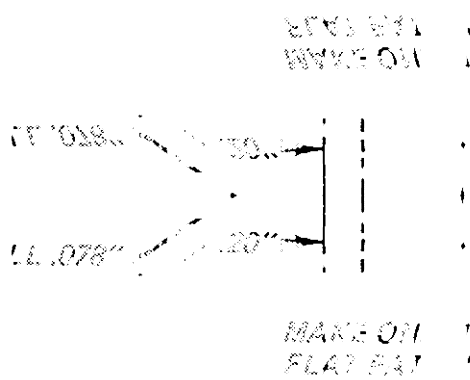
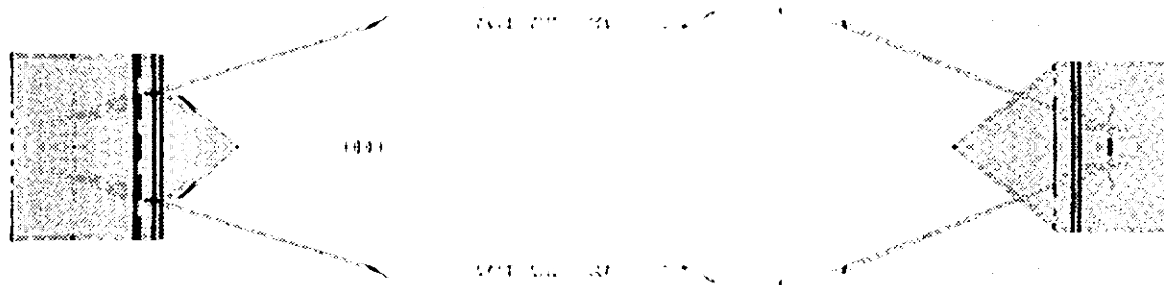




ST 88  
ST 88

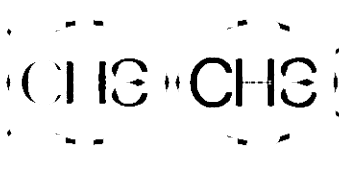
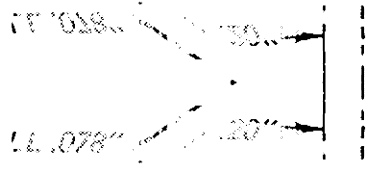
ST 88

ST 88  
ST 88  
EDU4BD1469@MFC.COM



NO EXAM  
MAKE ON

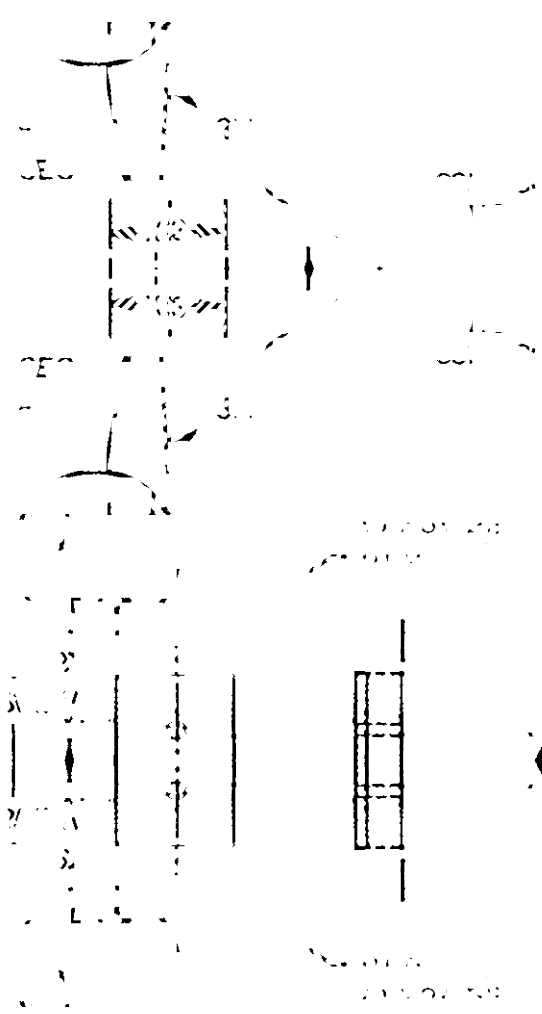
6-23-2021  
E



NO EXAM  
MAKE ON  
6-23-2021  
E

MAKE ON  
FLAT BAR

6-23-2021  
E

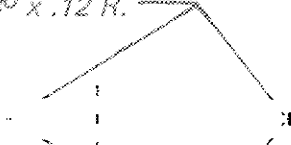


1  
 2  
 3

4  
 5  
 6

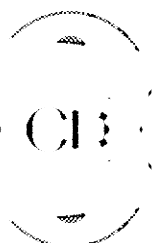


IML - BEND UP 780 x .12 R.



IMF - BEND UP 180 x .15 R.

THE DOCUMENT IS CODED BY



FROM THIS FLAT PATTERN

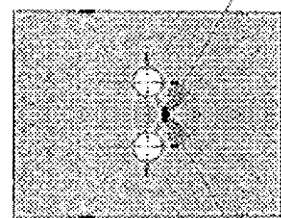
FROM THIS FLAT PATTERN

21119

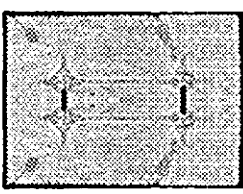
360 x .12 R.



FOUR PA.



21119 360 x .12 R.



28

THE DOCUMENT IS CODED BY

4130 3) EEC ) (B) MC



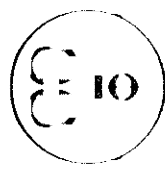
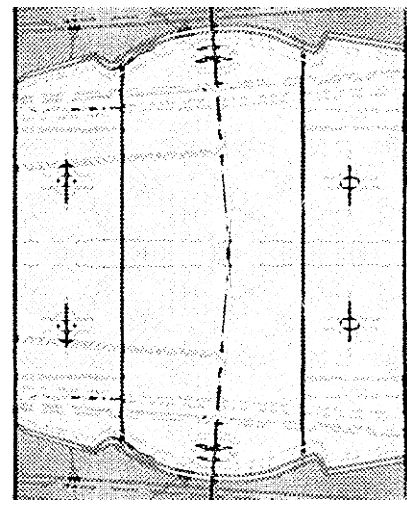


1993



U.S. GOVERNMENT PRINTING OFFICE  
WASHINGTON, D.C. 20540  
1993

U.S. GOVERNMENT PRINTING OFFICE



(10)

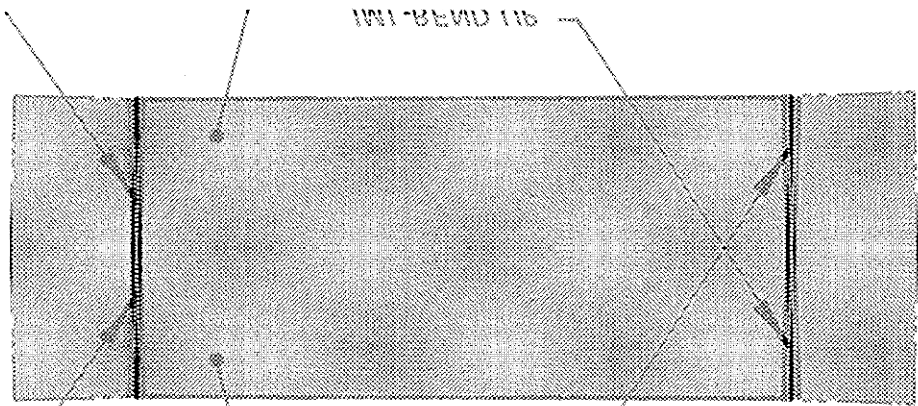
(1)

U.S. GOVERNMENT PRINTING OFFICE  
WASHINGTON, D.C. 20540  
1993

GPO

THE DOCUMENT IS COPYRIGHTED





IMI-BEND TIP

...AL (...F.)  
 JUST FIT WITHIN  
 CIRCUMFERENCE OF V54 RIB

IMI-BEND TIP  
 90° x .12"  
 (2 PLACES)

WHITE COPPER (H111)

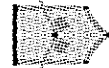
CR

ALONG OF V24 RIB  
 JUST FIT WITHIN  
 CIRCUMFERENCE

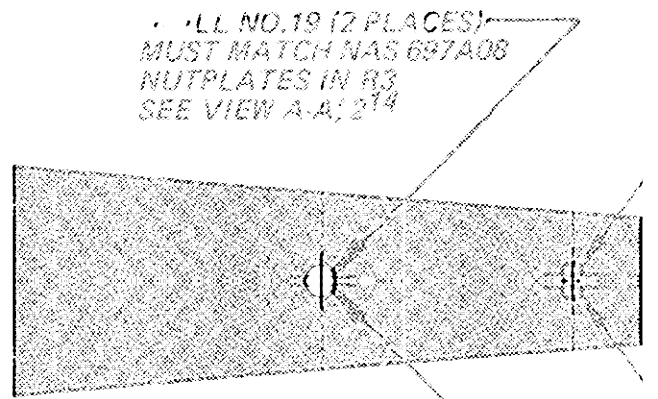
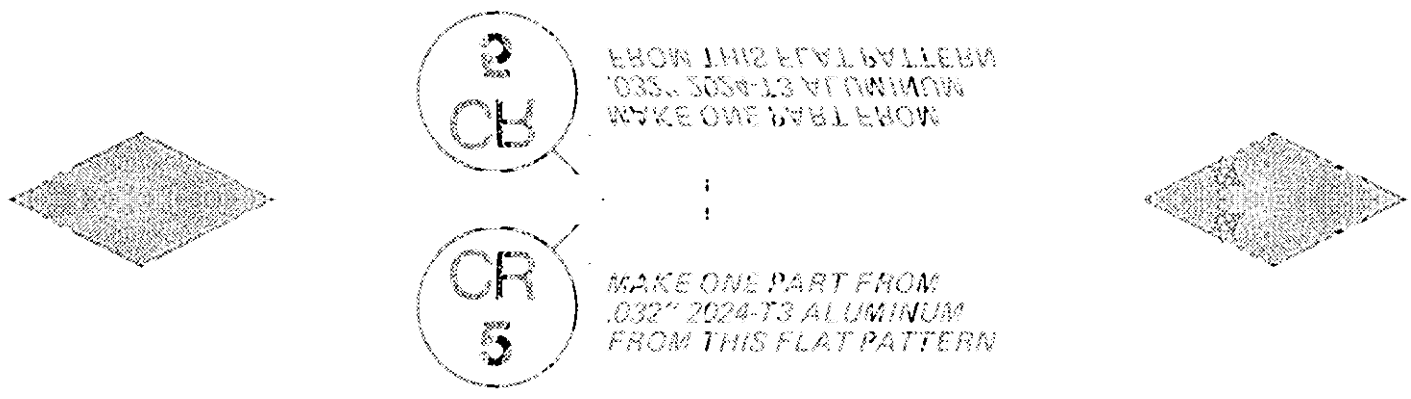
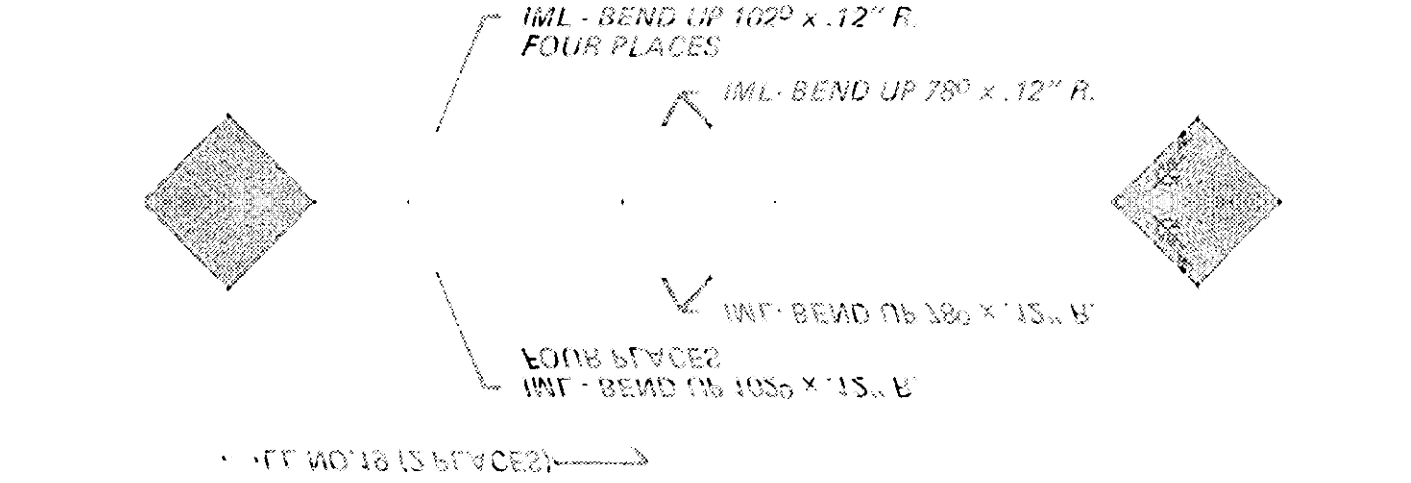
(2 PLACES)  
 90° x .13"  
 (2 PLACES)



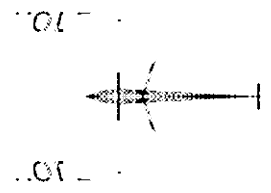
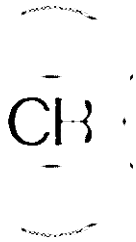
120 (TVPI)

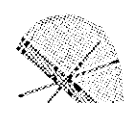
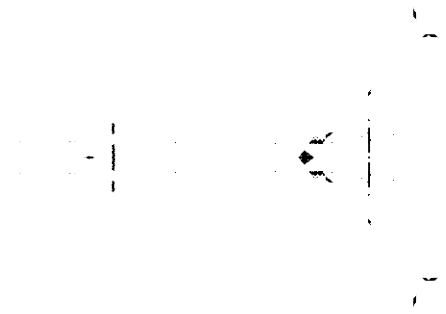
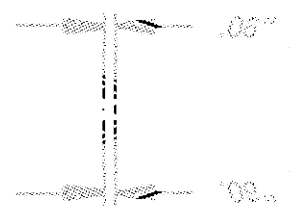
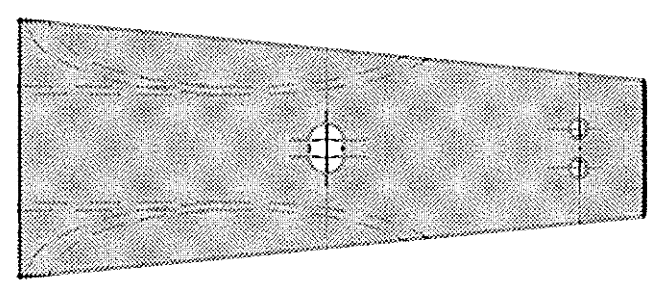
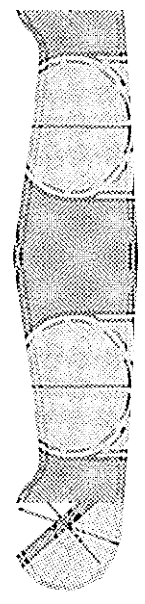
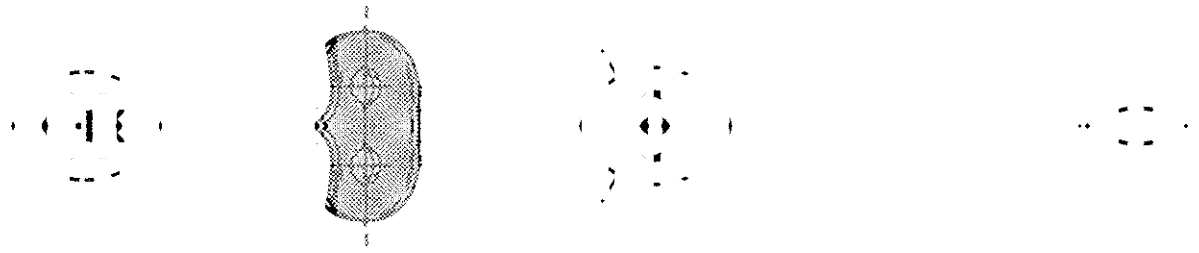


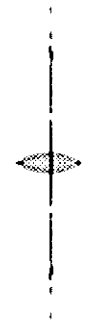
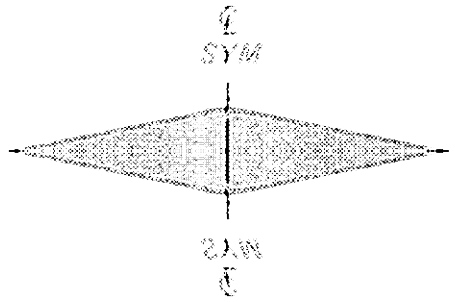
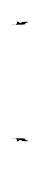
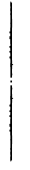
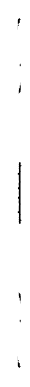
120 (TVPI)



SEE VIEW A-A; 214  
 MUST MATCH NAS 697A08  
 NUTPLATES IN R3  
 IN ALUMINUM

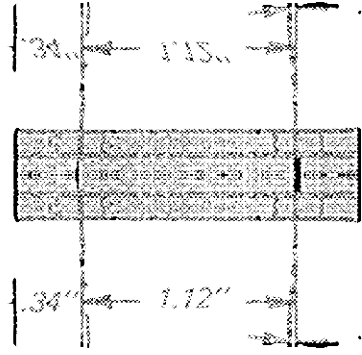
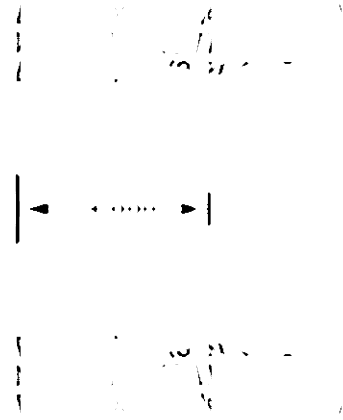






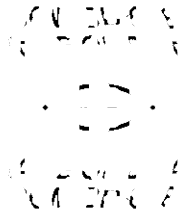
THIS APPARATUS IS NOT TO BE  
 REPRODUCED OR TRANSMITTED IN ANY FORM OR BY ANY MEANS, ELECTRONIC OR MECHANICAL, INCLUDING PHOTOCOPYING, RECORDING, OR BY ANY INFORMATION STORAGE AND RETRIEVAL SYSTEM.





ID 50.00

DRIFT



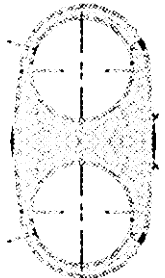
ID 20.00

DRILL



FROM THIS FLAT PATTERN  
 MAKE FOUR (4) PARTS FROM  
 .050" 2024-T3 ALUMINUM SHEET

DRIFT 1/

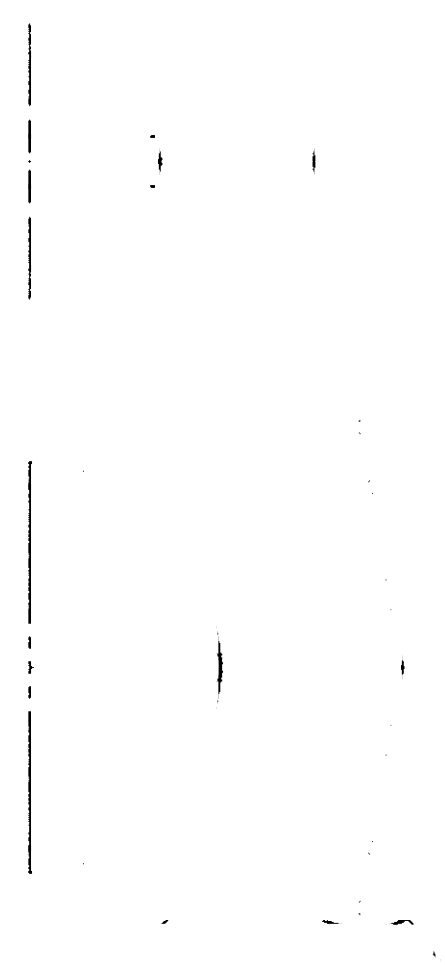
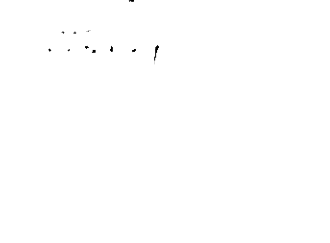
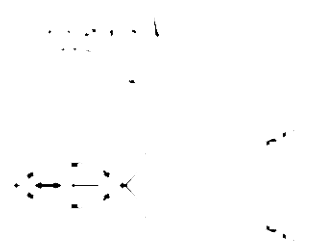
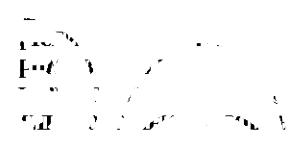
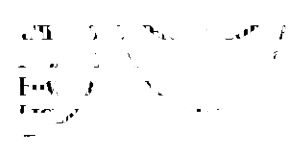
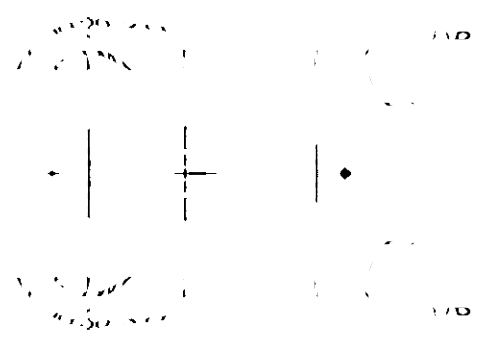


MAKE FOUR (4) PARTS FROM  
 .050" 2024-T3 ALUMINUM SHEET  
 FROM THIS FLAT PATTERN

DRILL 1/

FIG. 200 MENTIS COVER  
 DIMENSIONS IN INCHES UNLESS  
 OTHERWISE SPECIFIED  
 DIMENSIONS IN PARENT PARENTHESIS  
 ARE NOMINALS ONLY





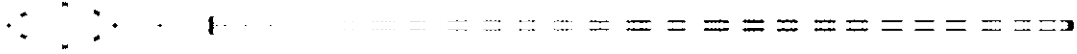
14-3

14-3



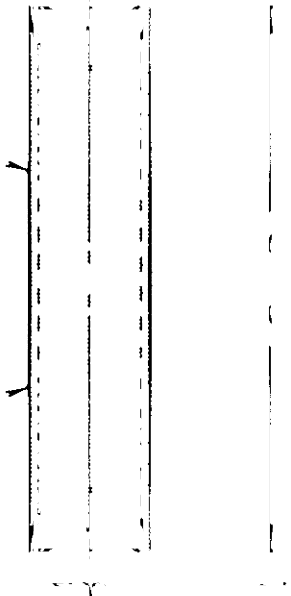
14-3





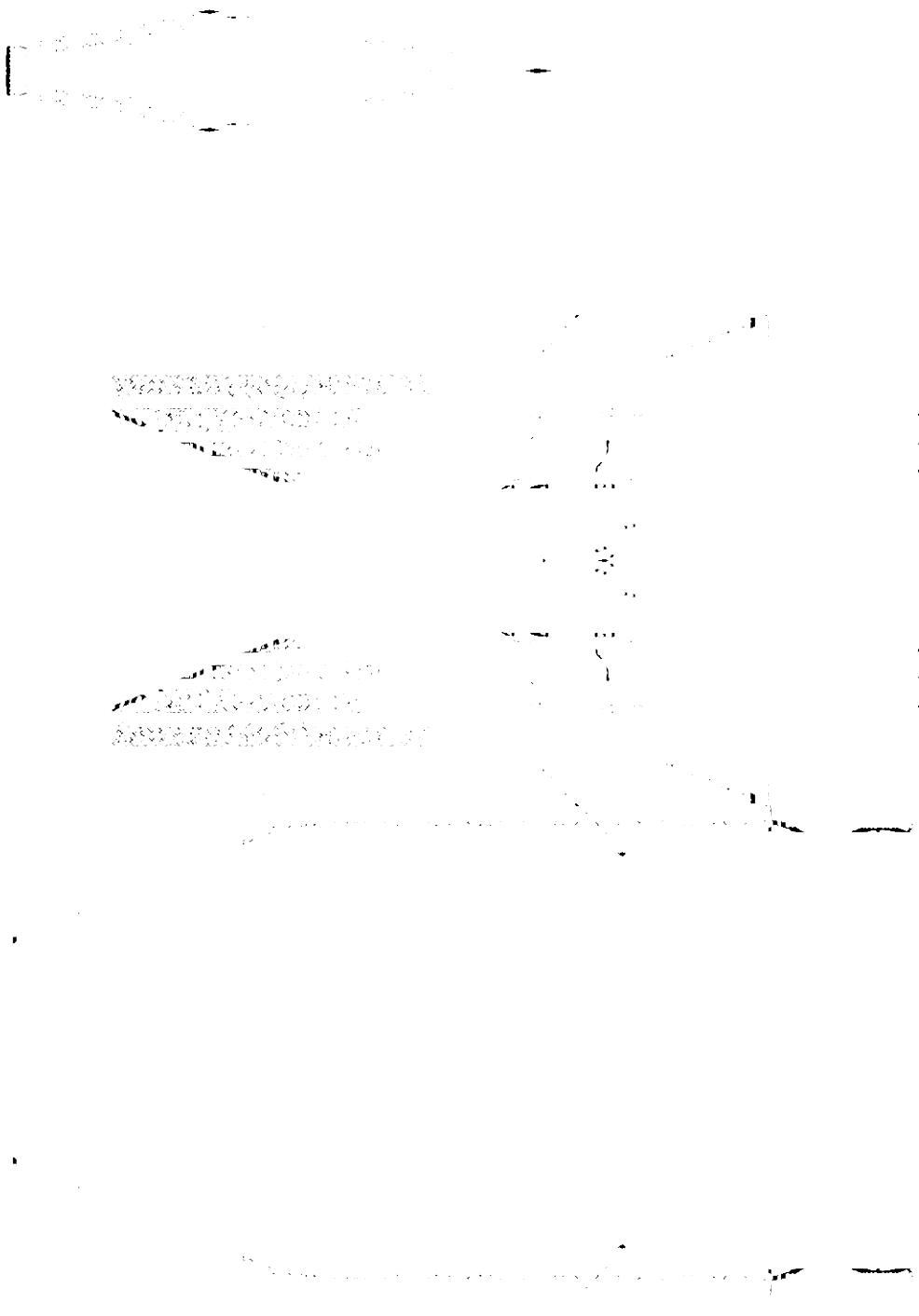
Handwritten text, possibly a label or note, located in the middle-left section of the page.

Handwritten text, possibly a label or note, located in the lower-middle-left section of the page.



Technical drawing notes or specifications located in the bottom right corner of the page.



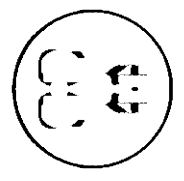


ADALTE MA E A D E N I C A  
 P R O J E T O R I A L I S T A  
 P R O J E T O R I A L I S T A

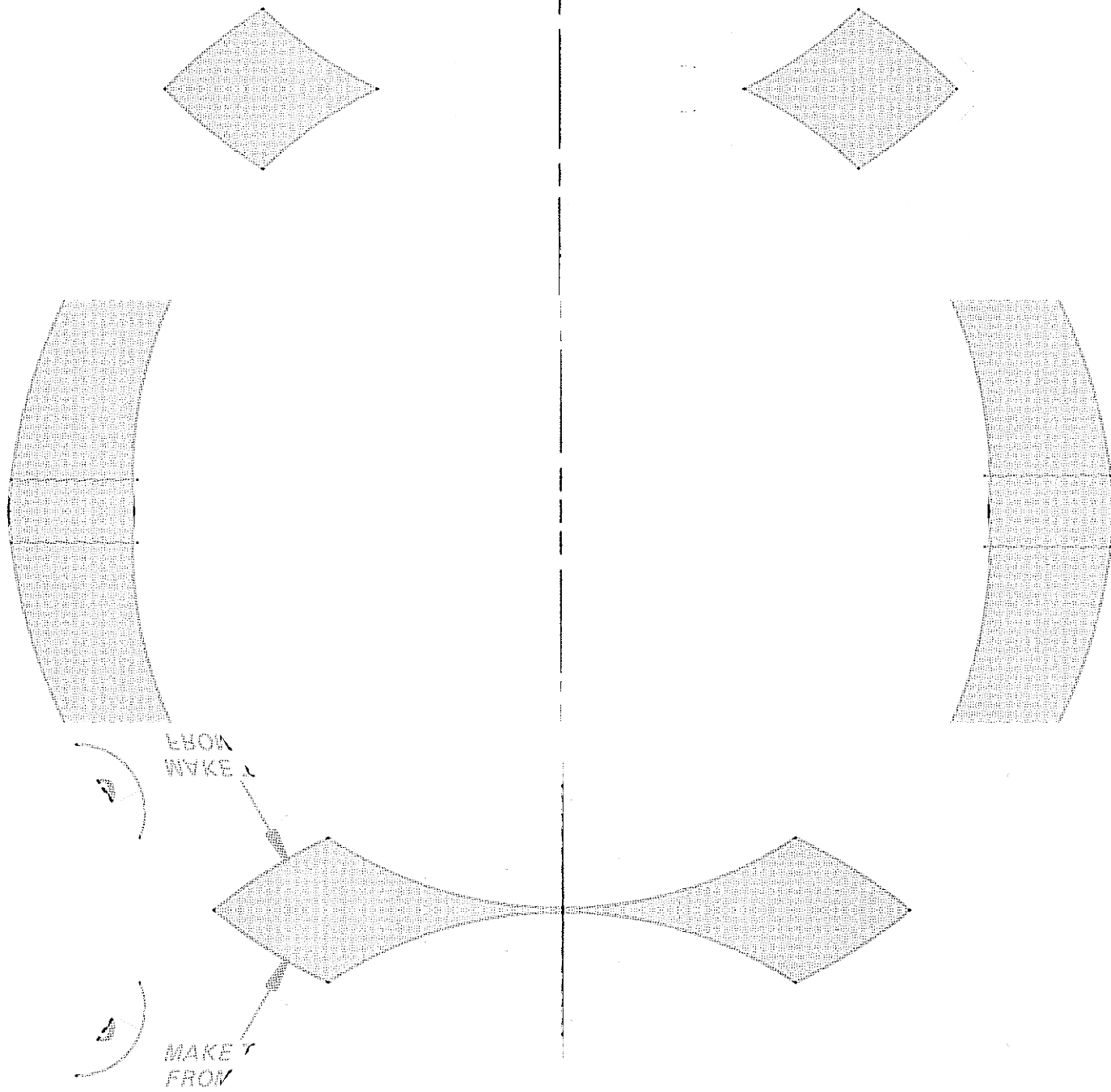
A 2000

1000

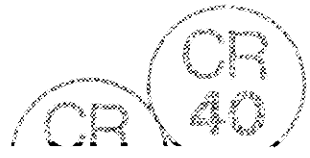
1000  
 2000  
 1000





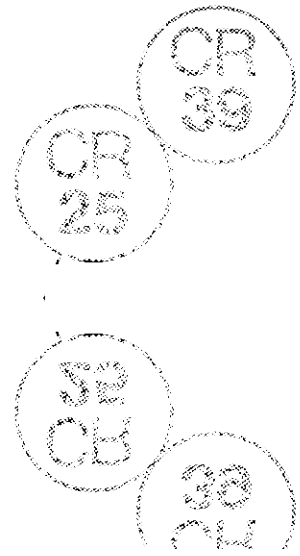
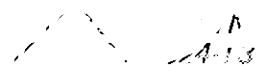
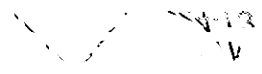
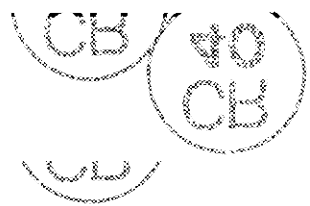


THIS DOCUMENT IS COPYRIGHT  
 BY THE NATIONAL BUREAU OF STANDARDS  
 AND TECHNOLOGY  
 FOR INFORMATION CONTACT WITH THE  
 NATIONAL BUREAU OF STANDARDS AND TECHNOLOGY  
 CONTACT THE NATIONAL BUREAU OF STANDARDS AND TECHNOLOGY  
 NATIONAL BUREAU OF STANDARDS AND TECHNOLOGY  
 NATIONAL BUREAU OF STANDARDS AND TECHNOLOGY



011-0000 -

011-0000



0000  
0000

TO OWNERS AND ARCHITECTS FOR REVIEW

0000

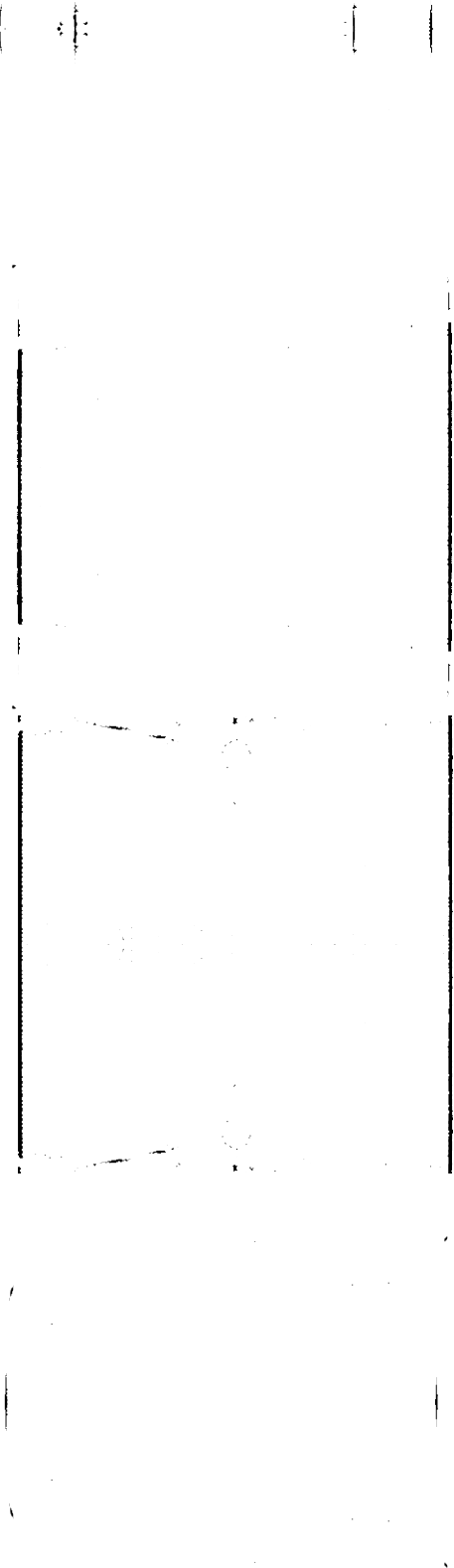
FOR REVIEW AND APPROVAL

0000

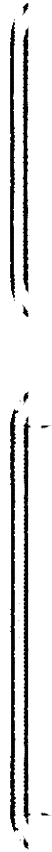
THIS DOCUMENT IS COPYRIGHTED  
 BY THE ARCHITECT AND ENGINEER  
 AND IS NOT TO BE REPRODUCED OR  
 TRANSMITTED IN ANY FORM OR BY  
 ANY MEANS, ELECTRONIC OR MECHANICAL,  
 INCLUDING PHOTOCOPYING, RECORDING,  
 OR BY ANY INFORMATION STORAGE AND  
 RETRIEVAL SYSTEM, WITHOUT THE  
 WRITTEN PERMISSION OF THE ARCHITECT  
 AND ENGINEER.



1004 1002



225 1004 1002 1003  
575 1004 1002 1003  
C. 1004 1002 1003



1004 1002 1003  
1004 1002 1003

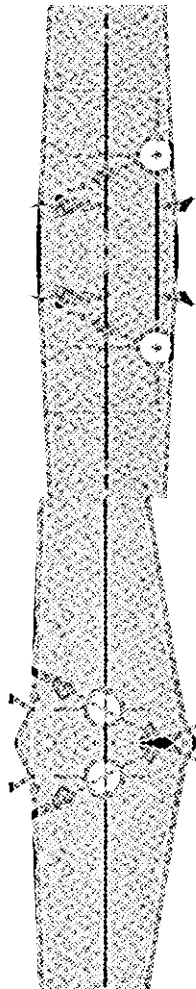
1004 1002 1003  
1004 1002 1003

1004 1002 1003  
1004 1002 1003

1004 1002 1003  
1004 1002 1003  
1004 1002 1003  
1004 1002 1003  
1004 1002 1003

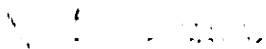
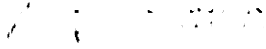


SECTION A-A →

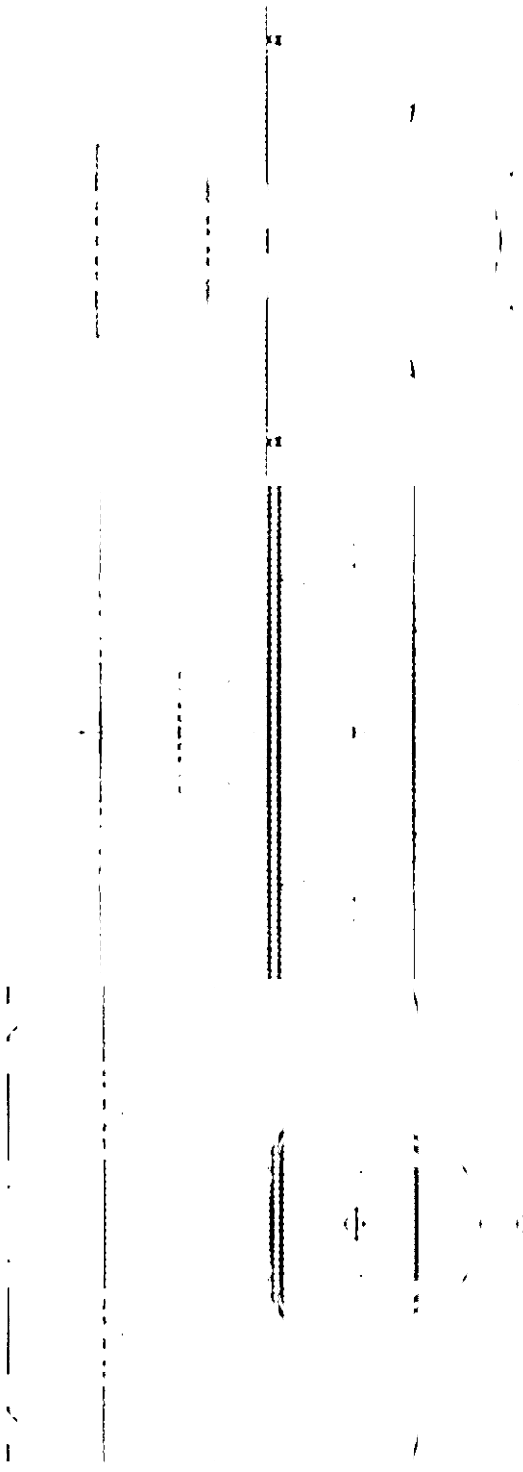


2  
3

SECTION B-B



SECTION C-C



(8 H(4CE3)



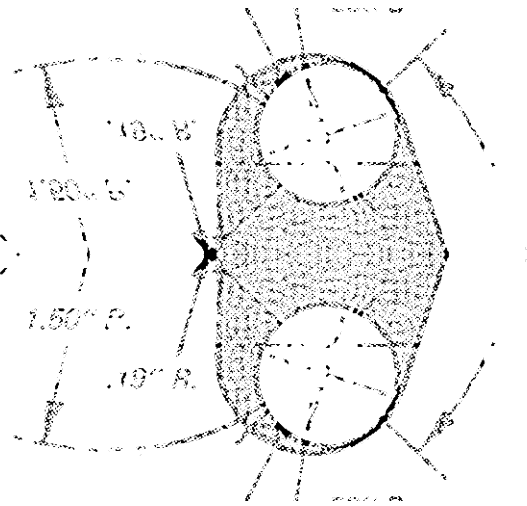
Техническое задание  
Деталь Двигатель 2002  
Лист 1 из 1



2: 31 2 3  
08000 13 13 00  
31 21 2 2

DRILL NO 45 5/16" DIA

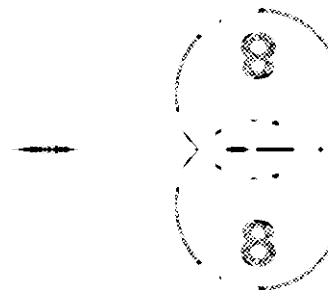
DRILL NO 42 1/2" DIA



THIS DOCUMENT IS COPYRIGHT  
DIGITAL DATA FACTORY © 2003

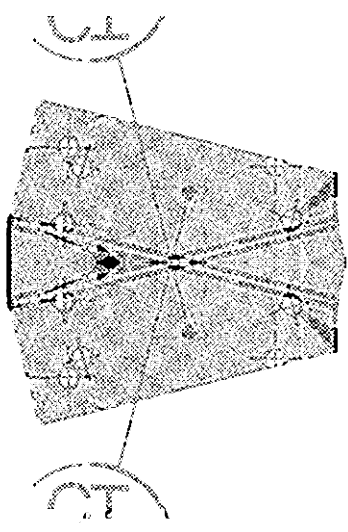
THIS DOCUMENT IS COPYRIGHT  
DIGITAL DATA FACTORY © 2003

DRILL NO 45 5/16" DIA





-----



31 (1) (2) (3)



32 (1) (2) (3)

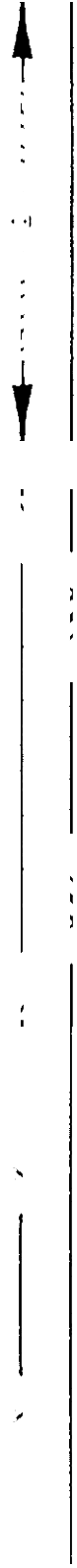
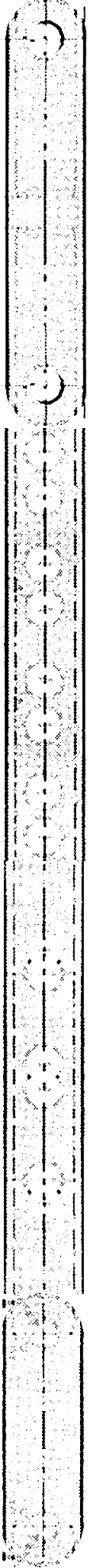


33 (1) (2) (3)



5.0

5.0



2.0

2.0

1.0

1.0

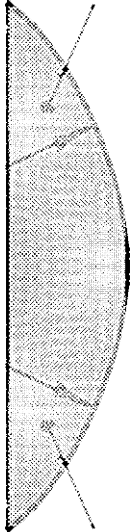


(1)

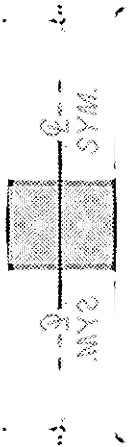
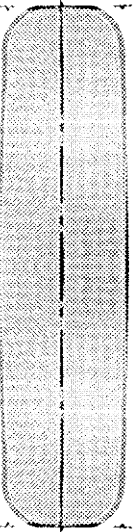
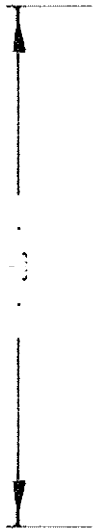


SECTIONAL VIEW OF THE SHAFT WITH A 1/8" DIA. HOLE

3.0

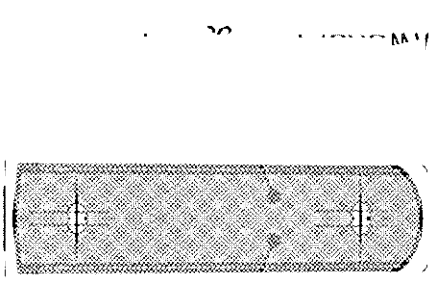


3.0



SECTIONAL VIEW OF THE SHAFT WITH A 1/8" DIA. HOLE

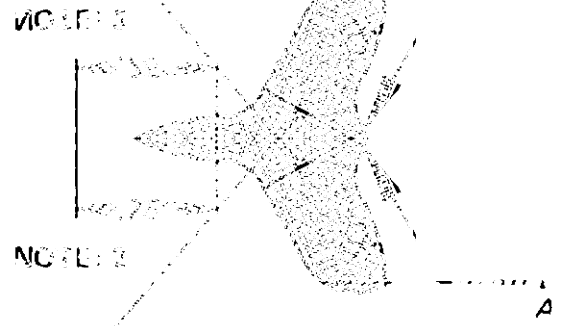




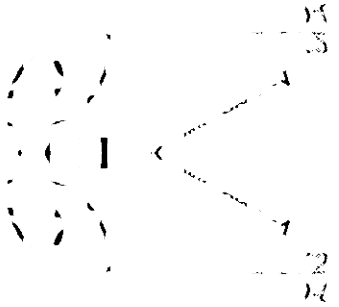
Handwritten text, possibly a date or reference number, located in the upper right quadrant.



1. The above information is for the use of  
the person to whom it is addressed  
and should not be disseminated to  
any other person without the express  
written consent of the originator.

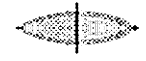


LIKE ONE PA,  
HIS FLAT PA7  
FROM 032 2024



(C)

FOR THE DIRECTOR



FROM 035 5034  
HIS FLAT PA7  
LIKE ONE PA

035 5034

(C)

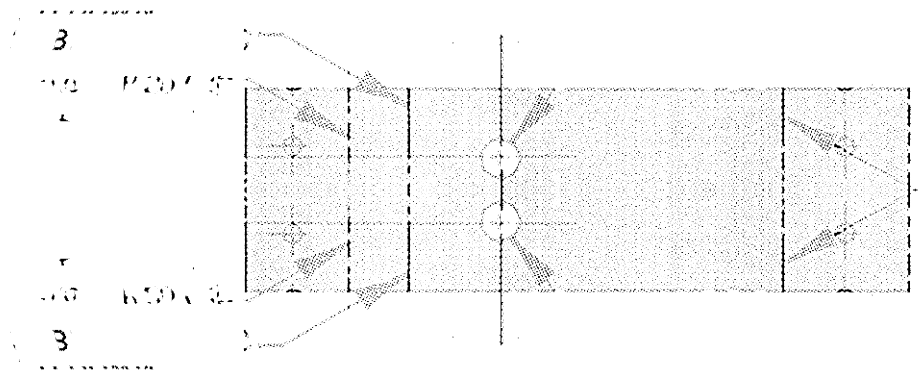
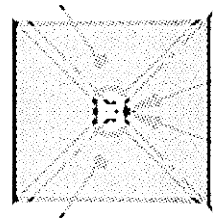
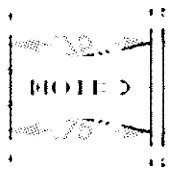
FOR THE DIRECTOR

(C)

FOR THE DIRECTOR

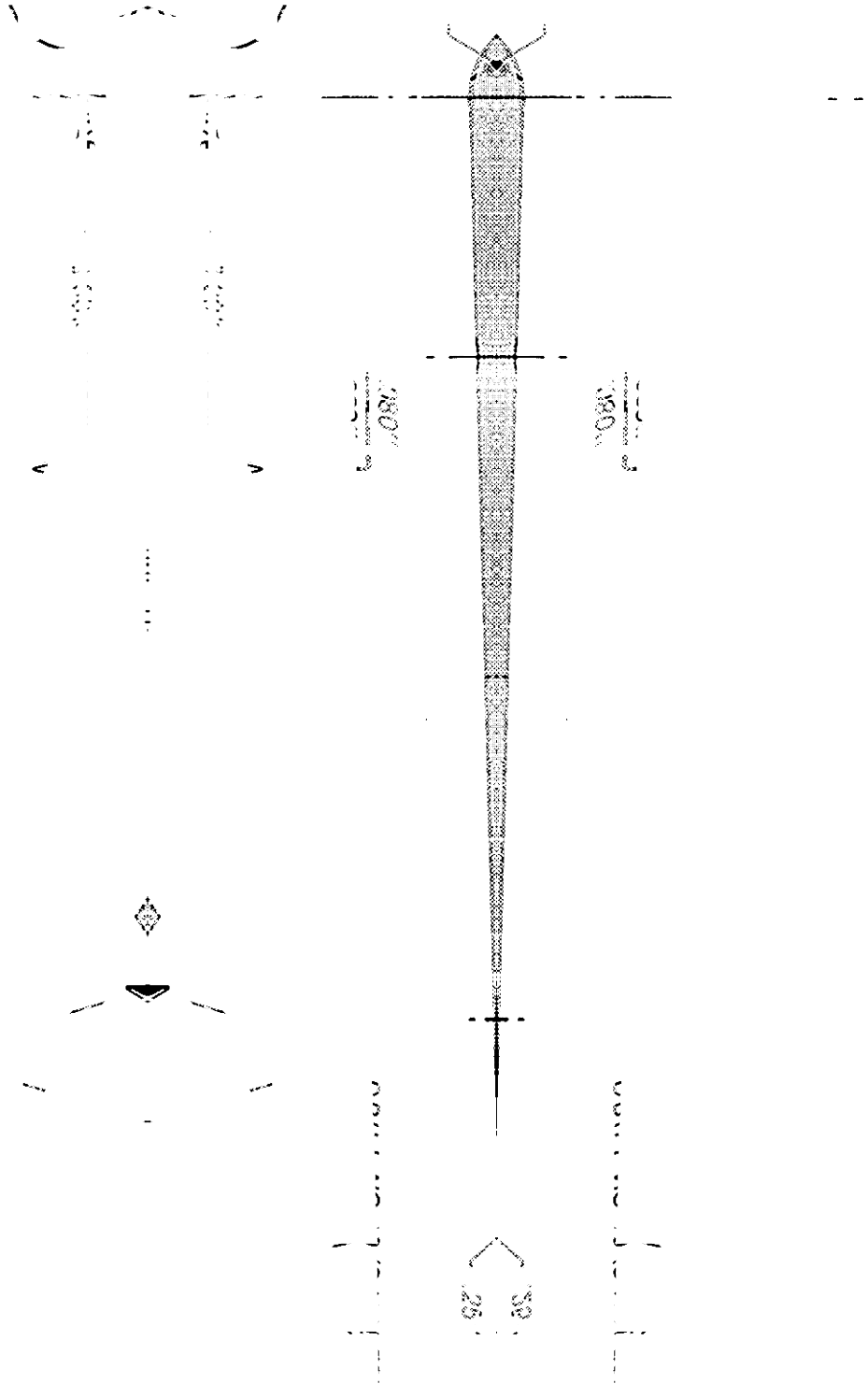
FROM THIS PATTERN  
 MAKE THREE

FROM THIS PATTERN  
 MAKE THREE



NOTE: THE PATTERN IS TO BE MADE IN ONE PIECE

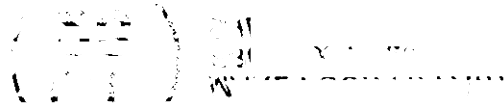
UNLESS OTHERWISE SPECIFIED  
 ALL DIMENSIONS ARE IN INCHES  
 UNLESS OTHERWISE SPECIFIED  
 ALL DIMENSIONS ARE IN INCHES  
 UNLESS OTHERWISE SPECIFIED  
 ALL DIMENSIONS ARE IN INCHES



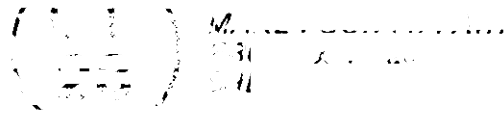
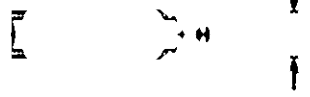
Technical drawing of a long, thin object, possibly a shaft or a rod, with various views and dimensions. Dimensions include 180, 25, and 50.

MA

MA



DELETED 10 -





-----

-----

-----

00  
181

00  
181

-----

-----

-----

-----

-----

-----

-----

-----

-----

-----

-----

-----

-----

-----

-----

-----

-----

-----

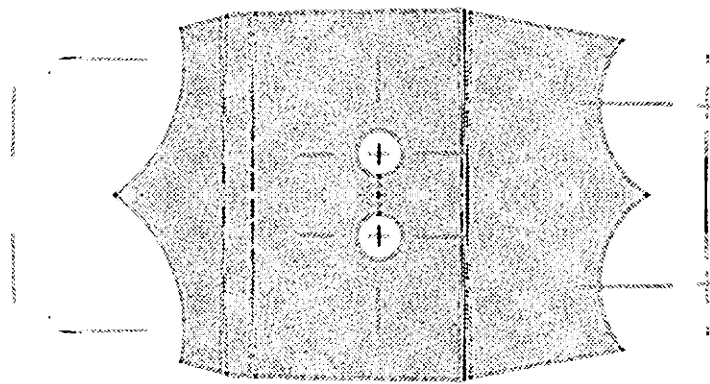
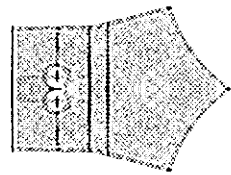
ADD PLACES

1 - 1

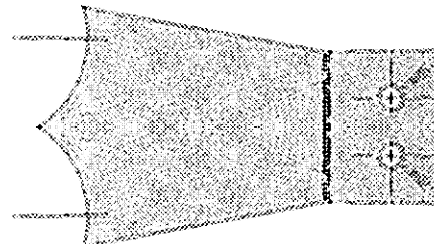
-----

WEST 560 W 582 Y 630 W  
WEST 580 Y 630 W

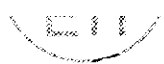




NO. 29 HOLE 6 PLACES

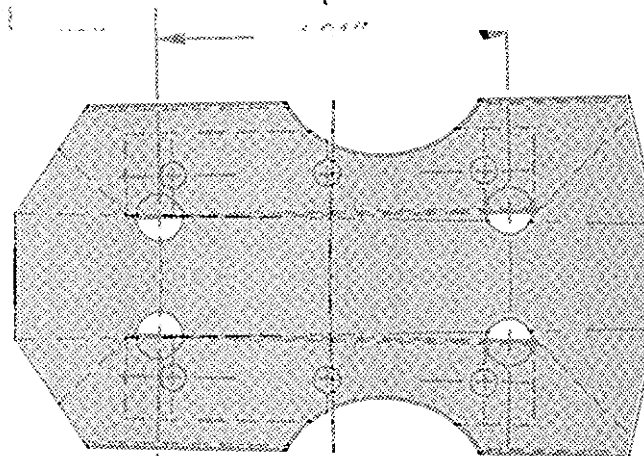
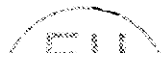


NO. 29 HOLE 6 PLACES



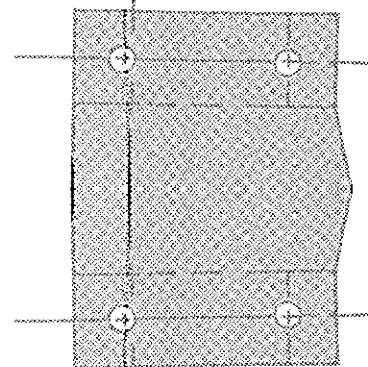
NO. 29 HOLE 6 PLACES

NO. 29 HOLE 6 PLACES



LOCATE A

OF



LOCATE A

OF

THIS DOCUMENT IS UNCLASSIFIED  
DATE 01-10-2001 BY 60320 UCBAW/STP/STP  
EXEMPT FROM AUTOMATIC DOWNGRADING AND  
DECLASSIFICATION  
THIS DOCUMENT IS UNCLASSIFIED

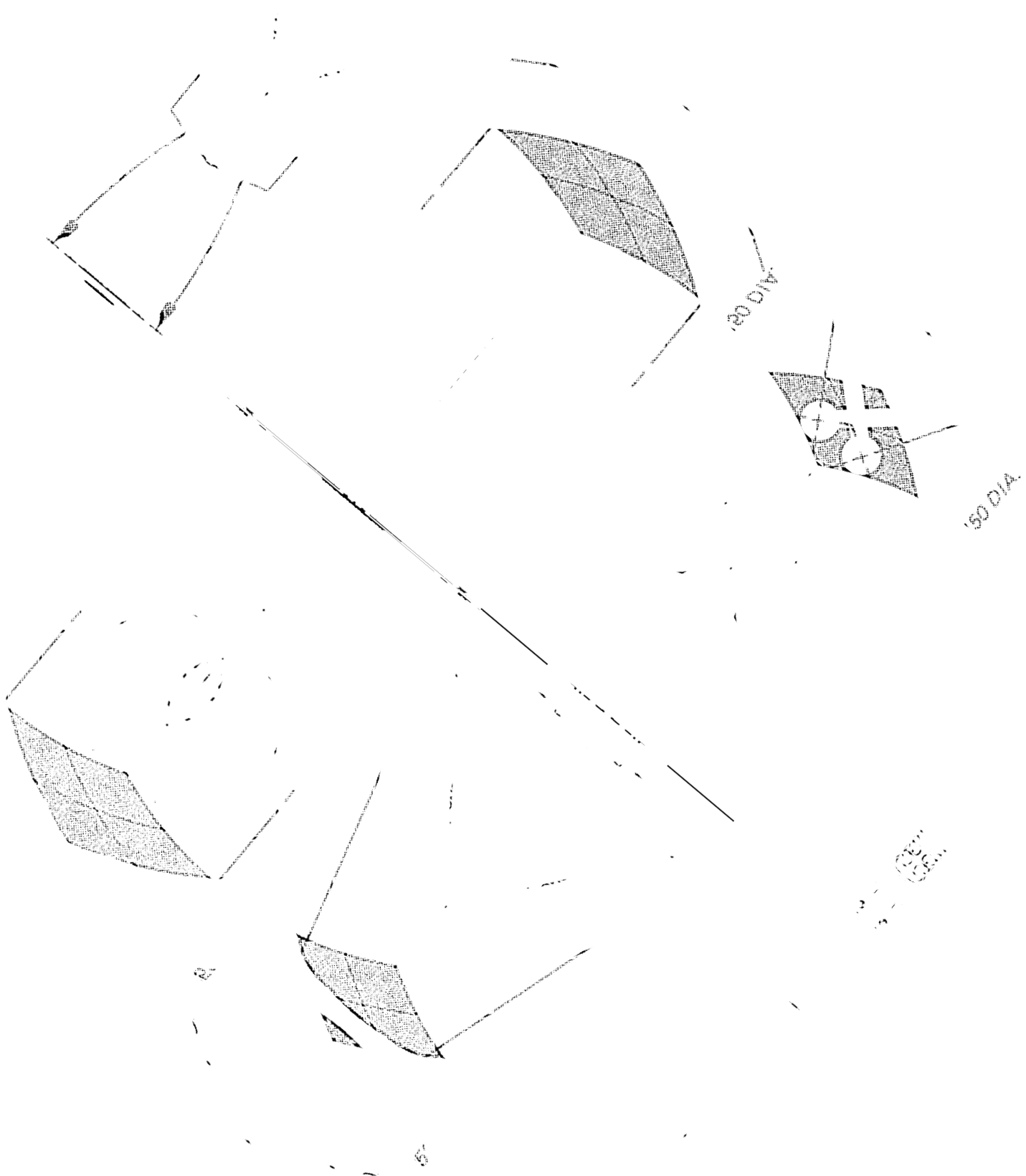
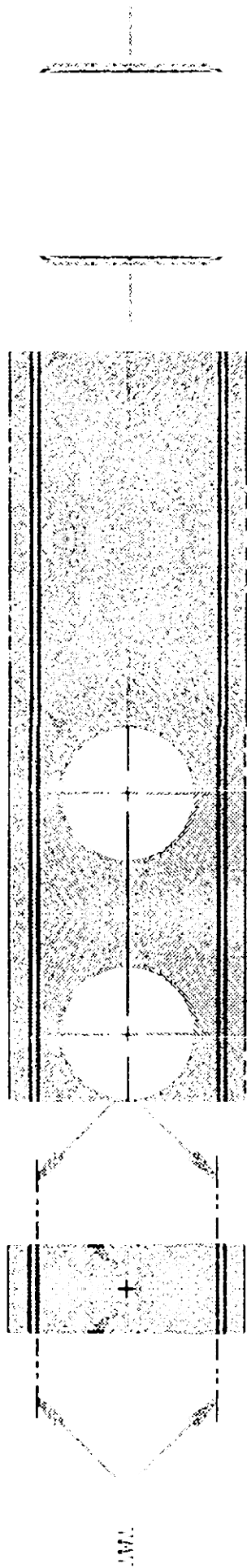




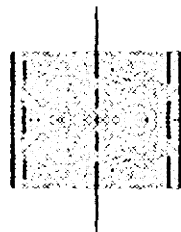
FIGURE 1



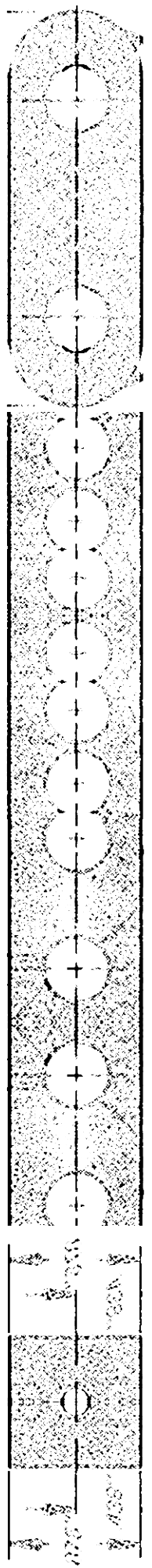
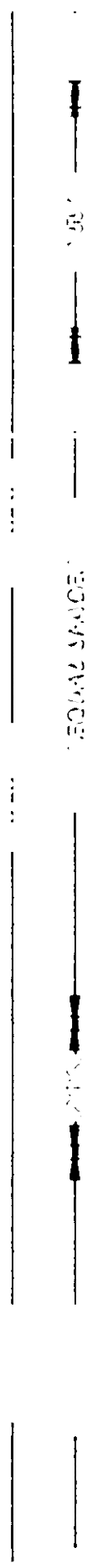
No. 8788-107

U.S. GOVERNMENT PRINTING OFFICE: 1963 O 351-107

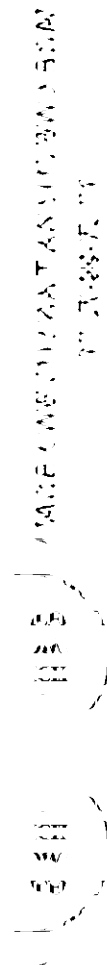
FIGURE 1  
 FIGURE 1A  
 FIGURE 1B  
 FIGURE 1C  
 FIGURE 1D  
 FIGURE 1E  
 FIGURE 1F  
 FIGURE 1G  
 FIGURE 1H  
 FIGURE 1I  
 FIGURE 1J  
 FIGURE 1K  
 FIGURE 1L  
 FIGURE 1M  
 FIGURE 1N  
 FIGURE 1O  
 FIGURE 1P  
 FIGURE 1Q  
 FIGURE 1R  
 FIGURE 1S  
 FIGURE 1T  
 FIGURE 1U  
 FIGURE 1V  
 FIGURE 1W  
 FIGURE 1X  
 FIGURE 1Y  
 FIGURE 1Z



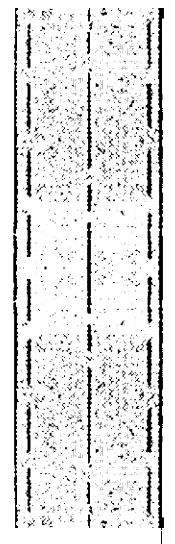
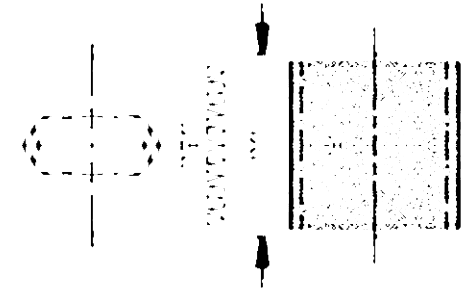
U.S. GOVERNMENT PRINTING OFFICE: 1963 O 351-107



BAR



SECTION A-A  
 SHOWS SQUARE AND 1/2 INCH  
 RECESSED



BAR



SECTION C-C

BAR

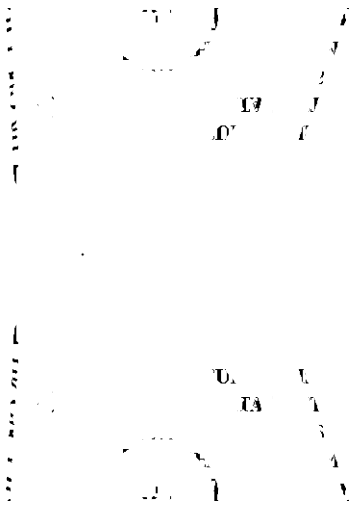
SECTION D-D

SECTION D-D

SECTION E-E



EDH4ED1469@HIC.COM



U  
A  
D

U  
A  
D



U  
A  
D

U  
A  
D

U  
A  
D

U  
A  
D

U  
A  
D

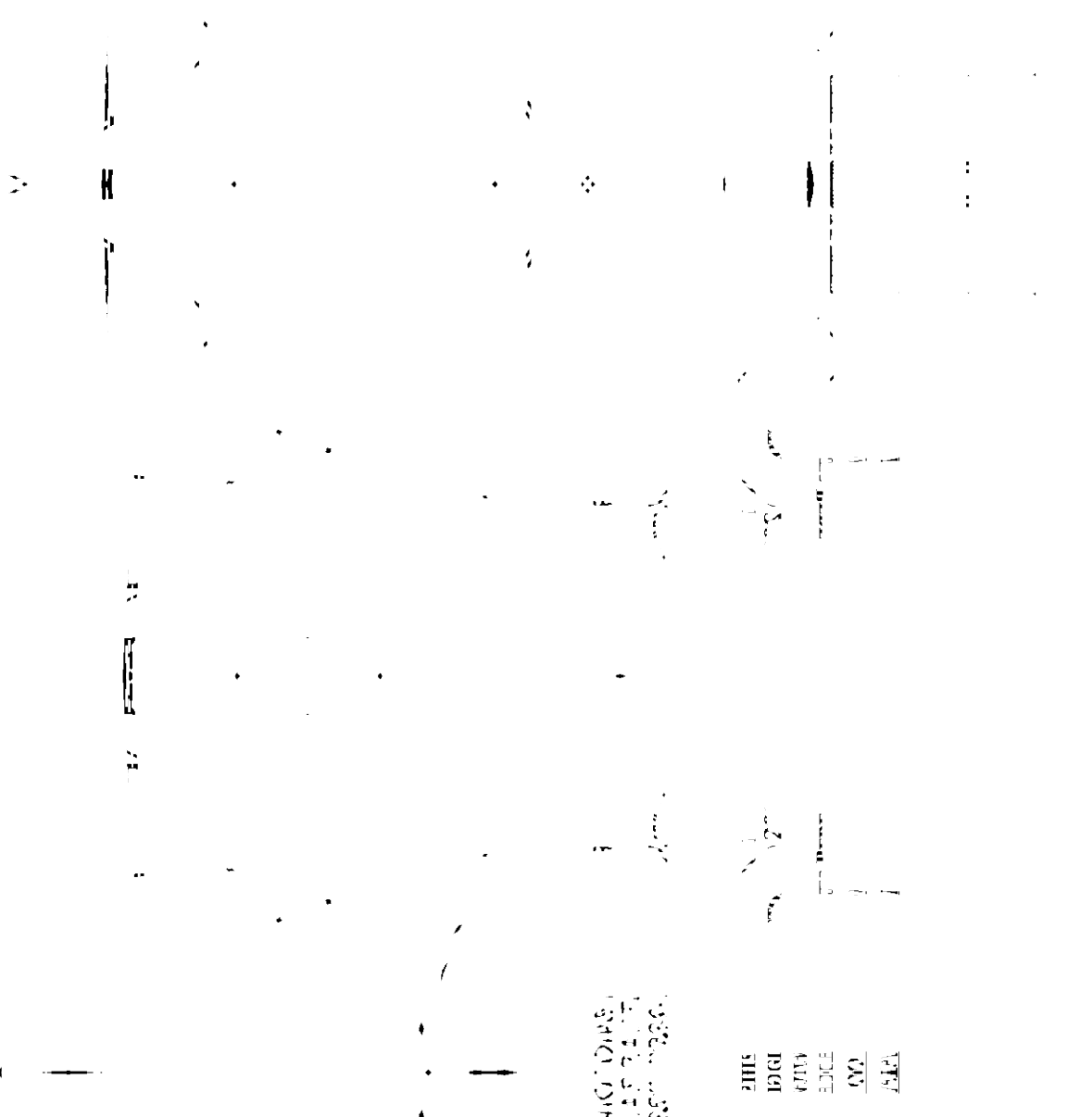
U  
A  
D



U  
A  
D



010359-08 60-9839-0

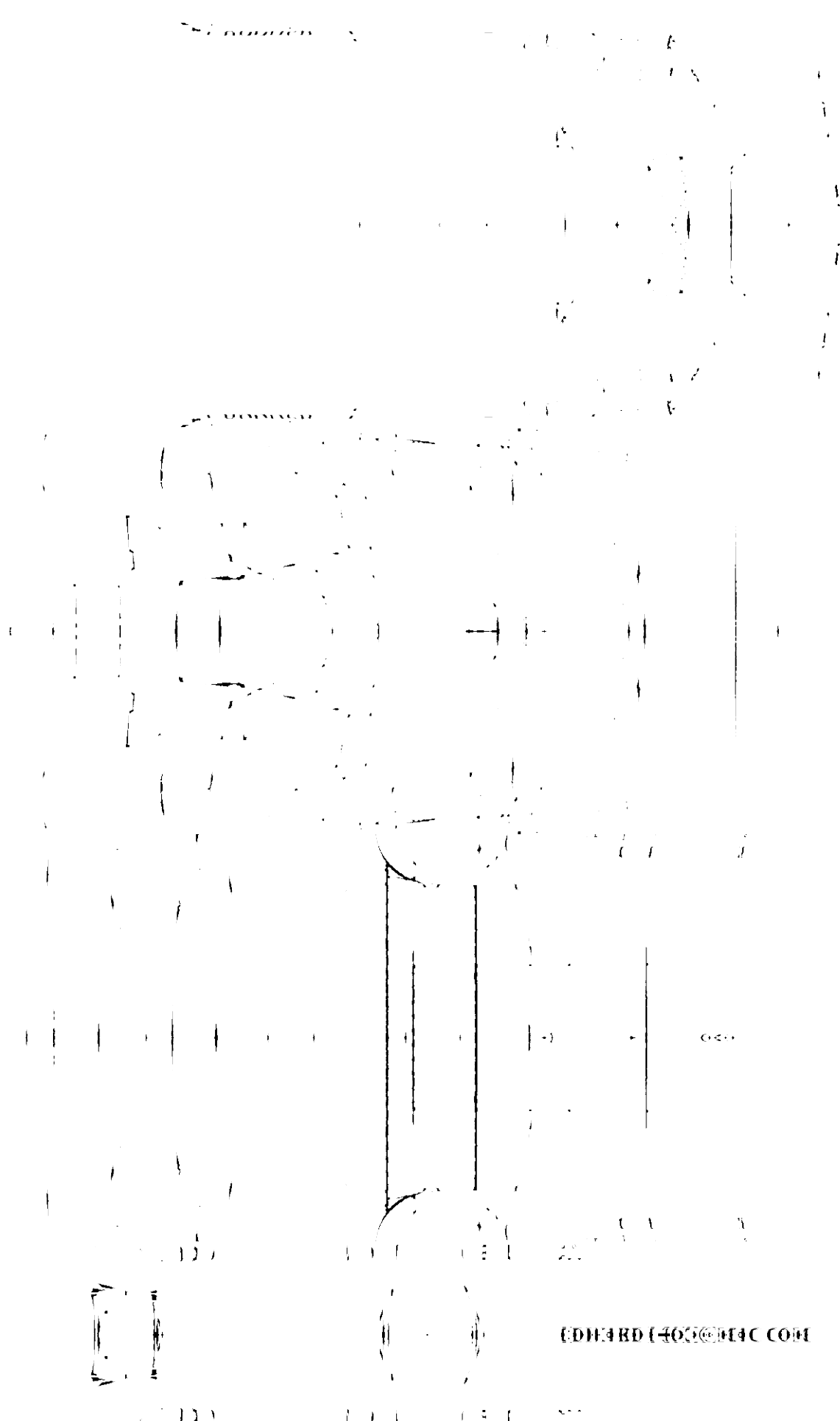


12410 DIPS  
 12410 DIPS  
 12410 DIPS

PTA  
 00  
 EDGE  
 FACE  
 EDGE  
 SHIP

12410 DIPS  
 12410 DIPS  
 12410 DIPS

12410 DIPS  
 12410 DIPS  
 12410 DIPS



EDWARD [405]@MFC.COM